

Houston

2019 - 2020

S
T
O
C
K

C
A
T
A
L
O
G



Lashley
& Associates, Inc.

713.462.8888

www.lashleyinc.com

888.527.4539



Lashley
& Associates, Inc.

3215 Claymoore Park Drive
Houston, TX 77043
Phone: (713) 462-8888
Fax: (713) 462-8881
www.lashleyinc.com
sales@lashleyinc.com

Warehouse Hours of Operation

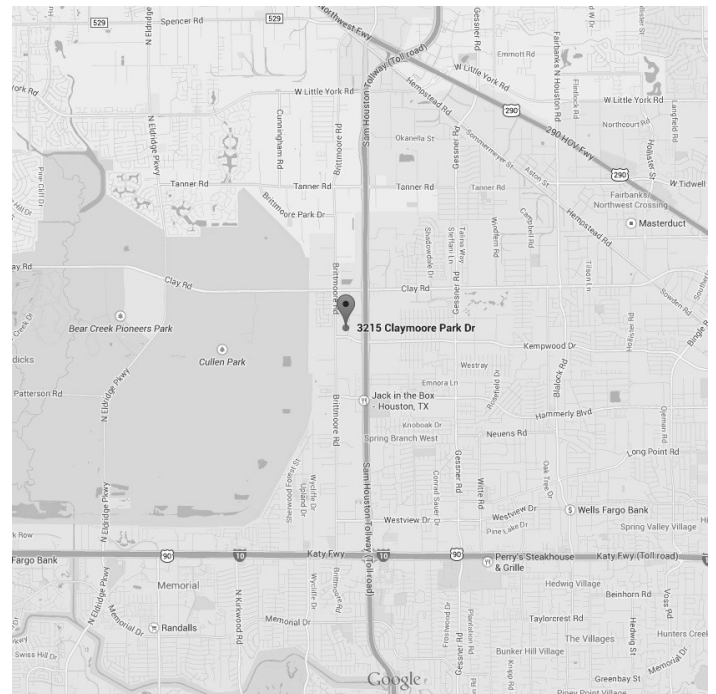
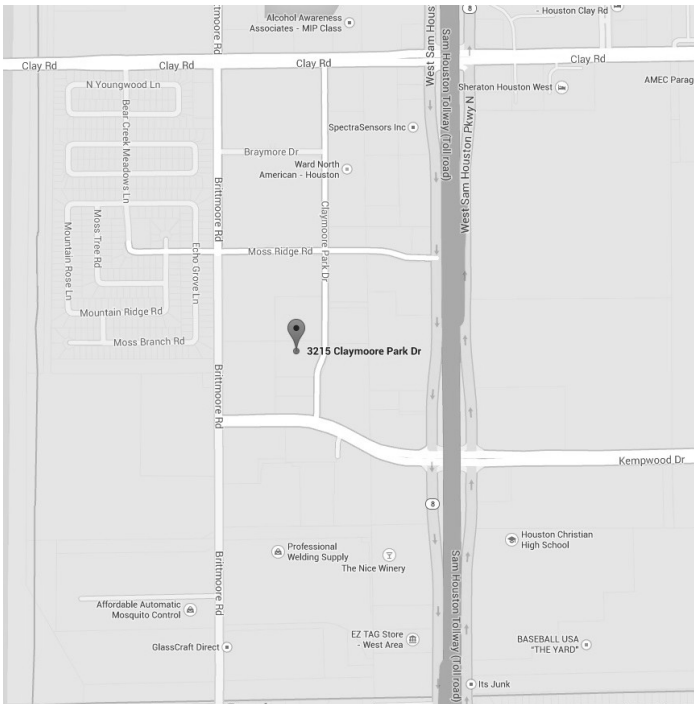
Monday - Friday: 7:00 AM to 5:00 PM
Saturday: Closed
Sunday: Closed



HVAC Contractor Sales Only

My Salesman is:

The warehouse and office are located one block west of Beltway 8, between Clay Road and Kempwood Drive.



W.L. Lashley & Associates, Inc.

Terms and Conditions of Sale

ALL ORDERS PLACED BY CUSTOMER WILL BE SUBJECT TO THE TERMS AND CONDITIONS OF SALE SET FORTH BELOW. ANY ADDITIONAL OR DIFFERENT TERMS PROPOSED BY CUSTOMER ARE DEEMED TO BE REJECTED UNLESS EXPRESSLY CONSENTED TO IN WRITING SIGNED BY AN OFFICER OF W.L. LASHLEY & ASSOCIATES, INC.

1.) **ORDERS:** Wholesale Only. All orders subject to acceptance by W.L. Lashley & Associates, Inc. Possession of this wholesale catalog does not constitute the right to purchase from W.L. Lashley & Associates, Inc. Minimum order net is \$25.00.

2.) **PAYMENT TERMS:** For customers with established credit, terms are net thirty (30) calendar days from date of our invoice. For other approved Customers, we accept cash, Visa, MasterCard, AMEX, certified check, or money order prior to shipment or at the time of pickup at our warehouse. All payments must be in U.S. dollars. Past due accounts are subject to a service charge of 1.5% per month.

3.) **COLLECTION FEES:** Customer agrees to pay all costs of collection, including, but not limited to, an attorney's fee equal to thirty percent (30%) of all sums due and outstanding, as well as court costs, if Customer fails or refuses to pay the amount due in accordance to the terms above.

4.) **SALES TAX:** Prices are exclusive of Texas sales tax. W.L. Lashley & Associates, Inc. is required to charge sales tax on orders for which sales tax exemption certificate or resale certificate has not been furnished.

5.) **DELIVERY:** All stock items are normally available for customer pick-up. Orders can be shipped at customer's expense via common carrier, local hauler, or UPS, F.O.B. our Houston, Texas warehouse. Shipping and handling charges will be added to invoice. Title of goods remains with W.L. Lashley & Associates, Inc. until payment in full has been received by W.L. Lashley & Associates, Inc.

Attention: For your protection, please do not accept damaged products. Inspect all shipments carefully before signing & accepting products from any freight company. If products are accepted with damage, freight companies will not pay for the repairs or replacements. Concealed freight damage should be reported to the shipping company immediately.

6.) **WARRANTIES:** (a) Customer may be entitled to the benefit from certain limited warranties provided directly by the manufacturer of the goods purchased. W.L. Lashley & Associates, Inc. assumes no liability for nor any responsibility under said third party warranties unless such liability or responsibility shall be specifically set forth in writing signed by an officer of W.L. Lashley & Associates, Inc. (b) Other than any standard warranties provided by the manufacturers, there are no other warranties provided by W.L. Lashley & Associates, Inc., expressed or implied, and W.L. Lashley &

Associates, Inc. disclaims all warranties, including warranties of merchantability, fitness for a particular purpose, and non-infringement of third party rights. No agent or representative of W.L. Lashley & Associates, Inc. is authorized to give any warranty, guarantee, or make any other statement contrary or inconsistent with this provision. The goods sold by W.L. Lashley & Associates, Inc. will not be engaged in any joint venture and W.L. Lashley & Associates, Inc. has no intention, obligation, or duty to warrant and/or represent the quality, performance and condition of such deliverables on their behalf.

7.) **RETURNS:** No stock items may be returned without prior written authorization. Requests to return stock items must be made within sixty (60) calendar days of purchase and must include our original invoice number. The returned goods must be new, in original undamaged packaging, and are subject to inspection. Returned goods are subject to a minimum twenty-five percent (25%) re-stocking fee. Items other than those shown in this catalog are special order items and are not returnable and cannot be cancelled once order is placed.

8.) **NOTICE OF CLAIM:** No action by Customer shall be brought at any time against W.L. Lashley & Associates, Inc. unless written notice of any claim alleged to exist is delivered by Customer to an officer of W.L. Lashley & Associates, Inc. within sixty (60) calendar days after the event complained of first becomes known or should have become known to Customer, whichever is earlier.

9.) **LIMITATION OF LIABILITY:** W.L. Lashley & Associates, Inc.'s liability in all events is limited to, and shall not exceed, the purchase price paid. Except as set forth herein, W.L. Lashley & Associates, Inc. shall not be liable for any loss or damages, direct, indirect, incidental or consequential.

10.) **JURISDICTION:** Customer hereby waives trial by jury and the right thereto in any action proceeding, arising out of, under or by reason of purchase from W.L. Lashley & Associates, Inc. Customer's contractual relationship with W.L. Lashley & Associates, Inc. constitutes an agreement made in Texas and is governed by the laws of Texas. At W.L. Lashley & Associates, Inc.'s election, any action arising from such agreement may be litigated in Texas, and Customer by purchasing from W.L. Lashley & Associates, Inc. consents to the jurisdiction and venue of any local, state, or federal court located in Texas. Any suit, action, or proceedings filed by Customer against W.L. Lashley & Associates, Inc. shall be instituted in a Texas State court located in Harris County, Texas or, if Federal Court jurisdiction is applicable, in a Federal Court located in Texas.

11.) **CHANGE OF OWNERSHIP NOTIFICATION:** The principals of the Customer agree to notify W.L. Lashley & Associates, Inc. by certified mail of any pending change of ownership of the Customer and further agree to be liable for all purchases should they fail to comply with said notification.

TABLE OF CONTENTS

Diffusers	1-2
Perforated Diffusers • Square Cone Diffusers	3-4
Surface Mount Frames • Round Diffusers	5
Plenum Slot Diffusers	6
Sidewall Supply Registers	7
Curved Blade Ceiling Supply Registers	8
Flush Frame Ceiling Supply Registers • Spiral Duct Grilles	9
Return Air Grilles	10
Eggcrate Return Air Grilles • Door Grilles	11
Return Air Filter Grilles	12
Volume Dampers • Opposed Blade Dampers • Duct Board Return Air Filter Grille	13-14
Single Duct Air Terminal Units	15
Roof Mount Direct Drive Fans	16
Roof Mount Belt Drive Fans	17
Square Inline Centrifugal Fans	18
Gravity Ventilators	19
Ceiling-Wall Cabinet Fans • Ventilation Fans • Speed Controls • Inline Adapters • Replacement Grilles	20-22
Roof Caps	23
Spiral Pipe	24
Double Wall B-Vent Pipe	25-26



Lashley
& Associates, Inc.

Snap-Lock Pipe • Wall Vents	27-28
Adapters • Extension Collars • Ductboard Starting Collars • Stick-on Collars	29-30
Sheet Metal Fittings	31
Round Manual Balancing Damper with Cable	32
Flexible Duct	33
Roof Curbs	34
Access Doors	35-37
Ceiling Radiation Dampers • Fire Dampers • Fuse Links • Acces Door Labels	38-39
Motorized Dampers • Pressure Relief Dampers • Wall Louvers • Backdraft Dampers	40-41
Young Regulator Bowden Cable Control System	42-43
Duro Dyne Damper Hardware	44-45
Flexible Duct Connectors • Vane Rail • Hollow Turning Vane	46
Duct Flanges • Cleats • Flange Corners • Weld Pins	47
Duct Hangers • Duct Straps • Stainless Steel Clamps	48
Sealants • Tape	49
Duct Wrap • Duct Liner • Duct Board • Fire Blankets	50
Tools	51-52
List of Represented Manufacturers	a-c
Product by Vendor	d-e
Alpha by Product	f-g

METALAIRE

Lay-In Square Cone Diffuser

- ◆ Steel or Aluminum Construction
- ◆ Round Neck Sizes, Standard 24 x 24 Module
- ◆ 360° Fixed Air Pattern
- ◆ White Finish

Steel Construction

Model 5700

NECK SIZE				
06	08	10	12	14

Aluminum Construction

Model 5700AL

NECK SIZE				
06	08	10	12	14

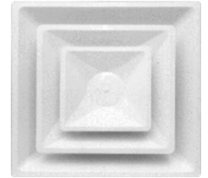
Steel Construction with R-6 Insulated Backpan

Model 5700I

NECK SIZE				
06	08	10	12	14

Available Accessories

TBPF Surface Mount Frames
BDS Dampers
EXT Extension Collars
SNAP58 Extra Snap-In Cone



12x12 Module

Model 5700

NECK SIZE	
06	08

12x12 Module

Model 5700AL

NECK SIZE
08

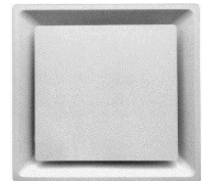
METALAIRE

Lay-In Square Plaque Diffuser

- ◆ Steel Construction
- ◆ Round Neck Sizes, Standard 24 x 24 Module
- ◆ 360° Fixed Air Pattern
- ◆ White Finish

Available Accessories

TBPF Surface Mount Frames
BDS Dampers
EXT Extension Collars



Model 5750I

NECK SIZE				
06	08	10	12	14

12x12 Module

Model 5750

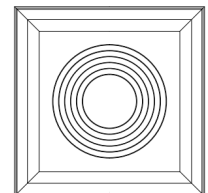
NECK SIZE
08

METALAIRE

Molded R-6 Fiberglass Insulated Back Pan

Model FGBP

- ◆ For 24 x 24 Lay-in Modules
- ◆ Fits Models 5700, 5750



METALAIRE

Lay-In Square Louver Face Diffuser

- ◆ Steel or Aluminum Construction
- ◆ Square Neck Sizes, Standard 24 x 24 Module
- ◆ Four-Way Fixed Air Pattern
- ◆ White Finish

Aluminum Construction

Model 5500

NECK SIZE (WIDTH X HEIGHT)				
06 x 06	09 x 09	12 x 12	15 x 15	18 x 18

Steel Construction

Model 5500S6

NECK SIZE (WIDTH X HEIGHT)				
06 x 06	09 x 09	12 x 12	15 x 15	18 x 18

Available Accessories

TBPF Surface Mount Frames
D5 Dampers
Square to Round Adapters



METALAIRE

Surface Mount Square Louver Face Diffuser

- ◆ Steel Construction
- ◆ Square Neck Sizes
- ◆ Four-Way Fixed Air Pattern
- ◆ White Finish
- ◆ Flat Frame Ceiling Opening is Listed Size + 2 3/4"
- ◆ Beveled Frame Ceiling Opening is Neck Size + 1"

Flat Frame

Model 5500S1

WIDTH X HEIGHT			
06 x 06	09 x 09	12 x 12	15 x 15

Beveled Frame

Model 5500S2

WIDTH X HEIGHT				
06 x 06	09 x 09	12 x 12	15 x 15	18 x 18

Available Accessories

D5 Dampers
Square to Round Adapters



METALAIRE

Lay-In Perforated Supply Diffuser

- ◆ Steel Construction
- ◆ Curved Blades in Neck
- ◆ Round Neck Sizes, Standard 24 x 24 Module
- ◆ Four-Way Air Pattern
- ◆ White Finish
- ◆ Removable Face

Steel Construction

Model 7600

NECK SIZE				
06	08	10	12	14

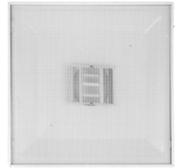
Black Steel Backpan with White Aluminum Face

Model 7600AF

NECK SIZE				
06	08	10	12	14

Available Accessories

TBPF Surface Mount Frames
BDS Dampers
EXT Extension Collars



METALAIRE

Lay-In Perforated Supply Diffuser

- ◆ Steel Construction
- ◆ Deflectors on Back of Face
- ◆ Round Neck Sizes, Standard 24 x 24 Module
- ◆ Four-Way Air Pattern
- ◆ White Finish
- ◆ Removable Face

Model 7500

NECK SIZE				
06	08	10	12	14

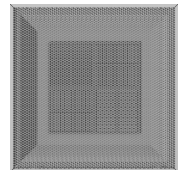
12x12 Module

Model 7500

NECK SIZE
06

Available Accessories

TBPF Surface Mount Frames
BDS Dampers
EXT Extension Collars



AMERICAN METAL PRODUCTS

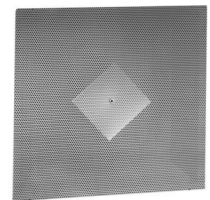
Lay-In Perforated Supply Diffuser

Model 4235

- ◆ Steel Construction
- ◆ Stamped Deflector Pattern Controller
- ◆ R-6 Ductboard Back
- ◆ White Finish
- ◆ Standard 24 x 24 Module

Available Accessories

100BD Ductboard Collars



METALAIRE

Lay-In Perforated Return Diffuser

- ◆ Steel or Aluminum Construction
- ◆ Square and Round Neck Sizes, Standard 24 x 24 Module

Available Accessories

TBPF Surface Mount Frame
OBD and BDS Dampers



Steel Construction, Round Neck

Model 7600R

NECK SIZE					
06	08	10	12	14	16

12x12 Module

Model 7600R

NECK SIZE
06

Steel Construction, Square Neck

Model 7650R

NECK SIZE (WIDTH X HEIGHT)					
06 x 06	08 x 08	10 x 10	12 x 12	14 x 14	22 x 22

24x12 Module

Model 7650R

NECK SIZE
22 x 10

24x24 Module Aluminum Face Construction, Square Neck

Model 7650AFR

NECK SIZE
22 x 22

12x12 Module

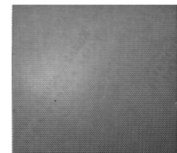
Model 7650R

NECK SIZE
10 x 10

METALAIRE

Lay-In Perforated Face Ceiling Panel

- ◆ Steel or Aluminum Construction
- ◆ White Finish



Steel Construction

Model SPRTB

PANEL SIZE	
24 x 12	24 x 24

Aluminum Construction

Model PRTB

PANEL SIZE
24 X 24

USAIRE

Lay-In Square Cone Diffuser

- ◆ Steel Construction
- ◆ Round Neck Sizes, Standard 24 x 24 Module
- ◆ 360° Fixed Air Pattern
- ◆ Includes R6 Insulated Fiberglass Back Pan



Steel Construction

Model 4706

NECK SIZE				
06	08	10	12	14

METALAIRE

Surface Mount Plaster Frame

- ◆ Aluminum Construction
- ◆ Steel Construction
- ◆ White finish



Model TBPF or Model STBPF

FRAME SIZE		
12 x 12	24 x 12*	24 x 24

METALAIRE

Round Cone Ceiling Diffuser

- ◆ Steel Construction
- ◆ Adjustable Horizontal or Vertical Air Pattern
- ◆ White Finish

Available Accessories
BDS Dampers



Model 3100SA2

SIZE	08	10	12	14
NECK DIAMETER	7 3/4	9 3/4	11 3/4	13 3/4
OUTER DIAMETER	16 1/8	21 7/8	21 7/8	28 7/8

US AIRE

Round Ceiling Diffuser

- ◆ Aluminum Construction
- ◆ Surface Mount
- ◆ White Finish

Available Accessories
BDS Dampers



Model 900

SIZE	06	08	10	12	14
OUTER DIAMETER	10 1/8	12 1/8	14 1/8	16 1/8	18 1/8



METALAIRE

T-Bar Supply Plenum Slot Diffuser

Available Accessories
PPF Surface Mount Frame

- ◆ Steel Construction
- ◆ Heavy Duty, Adjustable, Aluminum Pattern Controller
- ◆ 1 ½" Slot Width, Single Slot, 2 ½" Face
- ◆ 24" Length
- ◆ 48" Length



Model PHPSI24

Inlet Size
06
08*

Model PHPSI48

Inlet Size
06
08*
10*

**Oval inlets*

Don't see what you're looking for?
Ask us about our special order options!

METALAIRE

Single Deflection Sidewall Supply Register

- ◆ Aluminum Construction
- ◆ Multi-Shutter Damper
- ◆ Vertical Face Bars
- ◆ White Finish



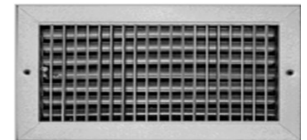
Model V4002M

WIDTH X HEIGHT							
08 x 04	10 x 04	12 x 04	14 x 04	16 x 04	18 x 06	20 x 04	24 x 04
08 x 06	10 x 06	12 x 06	14 x 06	16 x 06	18 x 08	20 x 06	24 x 06
08 x 08	10 x 08	12 x 08	14 x 08	16 x 08		20 x 08	24 x 08
	10 x 10	12 x 10				20 x 10	24 x 10
		12 x 12					24 x 12

METALAIRE

Double Deflection Sidewall Supply Register

- ◆ Aluminum Construction
- ◆ Opposed Blade Damper
- ◆ Vertical Front Bars
- ◆ White or Satin Silver Finish



White Finish

Model V4004

WIDTH X HEIGHT											
06 x 04	08 x 04	10 x 04	12 x 04	14 x 04	16 x 04	18 x 04	20 x 04	24 x 04	30 x 06	36 x 06	48 x 12
06 x 06	08 x 06	10 x 06	12 x 05	14 x 05	16 x 06	18 x 06	20 x 05	24 x 05	30 x 08	36 x 08	
	08 x 08	10 x 08	12 x 06	14 x 06	16 x 08	18 x 08	20 x 06	24 x 06	30 x 10	36 x 10	
		10 x 10	12 x 08	14 x 08	16 x 10	18 x 10	20 x 08	24 x 08	30 x 12	36 x 12	
			12 x 10	14 x 10	16 x 12	18 x 12	20 x 10	24 x 10			
			12 x 12				20 x 12	24 x 12			

Satin Silver Finish

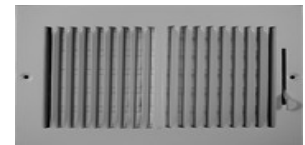
Model AV4004

WIDTH X HEIGHT				
10 x 06	12 x 06	14 x 06	16 x 06	24 x 08
10 x 08	12 x 08	14 x 08	16 x 08	24 x 10
				24 x 12

USAIRE

Sidewall Supply Register

- ◆ Stamped Steel Construction
- ◆ Multi-Shutter Damper
- ◆ White Finish
- ◆ Two-Way Air Pattern



Model 102M

WIDTH X HEIGHT			
08 x 04	10 x 08	12 x 06	14 x 06
		12 x 08	14 x 08

USAIRE

Surface Mount Curved Blade Ceiling Supply Register

Three-Way Air Pattern

Model 203M

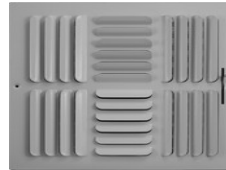
WIDTH X HEIGHT			
08 x 04	10 x 06	12 x 06	14 x 06
08 x 06	10 x 08	12 x 08	14 x 08
08 x 08		12 x 12	

Four-Way Air Pattern

Model 204M

WIDTH X HEIGHT			
06 x 06	08 x 08	10 x 10	12 x 12

- ◆ Stamped Steel Construction
- ◆ Multi-Shutter Damper
- ◆ White Finish



METALAIRE

Surface Mount Curved Blade Ceiling Supply Register

One Way

Model L1

WIDTH X HEIGHT				
08 x 04	10 x 06	12 x 06	14 x 06	16 x 06
08 x 08	10 x 08	12 x 08	14 x 08	
	10 x 10	12 x 12		

Two Way

Model LT1

WIDTH X HEIGHT				
06 x 06	08 x 04	10 x 06	12 x 12	14 x 06
	08 x 08	10 x 10		

Three Way

Model LS31

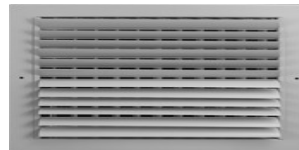
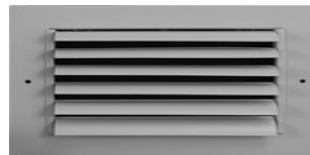
WIDTH X HEIGHT					
06 x 06	08 x 04	10 x 06	12 x 06	14 x 06	16 x 06
	08 x 06	10 x 08	12 x 08	14 x 08	16 x 08
	08 x 08	10 x 10	12 x 12		

Four Way

Model LS41

WIDTH X HEIGHT						
06 x 06	08 x 08	10 x 10	12 x 12	14 x 14	16 x 16	18 x 18

- ◆ Aluminum Construction
- ◆ Opposed Blade Damper
- ◆ Adjustable Curved Blades
- ◆ White Finish



USAIRE

Surface Mount Flush Frame Ceiling Supply Register

- ◆ Stamped Steel Construction
- ◆ Multi-Shutter Damper
- ◆ White Finish

Three-Way Air Pattern

Model 103

WIDTH X HEIGHT			
08 x 04	10 x 06	12 x 06	14 x 06
	10 x 08	12 x 08	14 x 08
		12 x 12	



Four-Way Air Pattern

Model 104

WIDTH X HEIGHT			
06 x 06	08 x 08	10 x 10	12 x 12



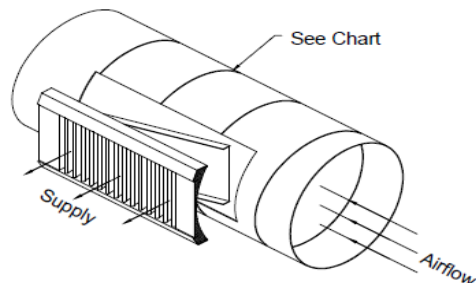
METALAIRE

Spiral Duct Grille

- ◆ Aluminum Construction
- ◆ Double Deflection
- ◆ Extractor with Wire Handle
- ◆ Satin Silver Finish

Model 4004SP

Size	Pipe Diameter	CFM @ 800 FPM
12 x 04	08" - 24"	203
12 x 06	12" - 24"	328
24 x 06	12" - 24"	705
16 x 08	20" - 36"	614
20 x 08	20" - 36"	775
24 x 08	20" - 36"	936



METALAIRE

Return Air Grille

- ◆ Aluminum or Steel Construction
- ◆ 45° Deflection
- ◆ 3/4" Blade Spacing
- ◆ Surface Mount or Lay-In
- ◆ White Finish



Aluminum Construction, Surface Mount

Model RH

WIDTH X HEIGHT											
06 x 06	08 x 04	10 x 06	12 x 06	14 x 06	16 x 06	18 x 10	20 x 06	24 x 06	30 x 10	36 x 12	48 x 12
	08 x 06	10 x 08	12 x 08	14 x 08	16 x 08	18 x 12	20 x 10	24 x 08	30 x 12	36 x 18	48 x 18
	08 x 08	10 x 10	12 x 12	14 x 12	16 x 12	18 x 18	20 x 12	24 x 10	30 x 14	36 x 24	48 x 24
			12 x 18	14 x 14	16 x 16	18 x 24	20 x 16	24 x 12	30 x 16	36 x 36	48 x 30
			12 x 24			18 x 30	20 x 20	24 x 16	30 x 20	36 x 48	48 x 36
			12 x 30			18 x 36	20 x 30	24 x 18	30 x 24		48 x 48
			12 x 36					24 x 20	30 x 30		
								24 x 24	30 x 36		
								24 x 30	30 x 48		
								24 x 36			
								24 x 48			

Aluminum Construction, Lay-in - Model RHTB

NECK	10 x 10	22 x 10	22 x 22	22 x 46	46 x 22
MODULE	12 x 12	24 x 12	24 x 24	24 x 48	48 x 24

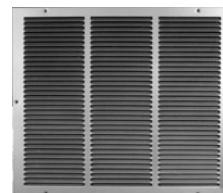
Steel Construction, Lay-in - SRHTB

NECK	22 x 22
MODULE	24 x 24

USAIRE

Return Air Grille

- ◆ Stamped Steel Construction
- ◆ 50° Fixed Blade Deflection
- ◆ Surface Mount
- ◆ White Finish



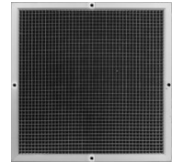
Model 1400

WIDTH X HEIGHT										
06 x 06	08 x 08	10 x 06	12 x 08	14 x 06	16 x 08	18 x 06	20 x 06	24 x 06	30 x 12	36 x 12
		10 x 10	12 x 12	14 x 08	16 x 12	18 x 12	20 x 12	24 x 08	30 x 14	36 x 14
			12 x 24	14 x 14	16 x 16	18 x 18	20 x 14	24 x 10	30 x 24	36 x 18
					16 x 20	18 x 24	20 x 16	24 x 12		
							20 x 20	24 x 14		
								24 x 16		
								24 x 18		
								24 x 24		
								24 x 36		

METALAIRE

Egg Crate Return Air Grille

- ◆ Aluminum Construction
- ◆ $\frac{1}{2}$ " x $\frac{1}{2}$ " x $\frac{1}{2}$ " Aluminum Grid Core
- ◆ Lay-in or Surface Mount
- ◆ White Finish



Surface Mount

Model CC5

WIDTH X HEIGHT										
06 x 06	08 x 08	10 x 10	12 x 12	14 x 14	16 x 16	18 x 18	20 x 20	24 x 12	24 x 24	36 x 12

Lay-in -

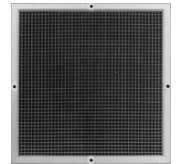
Model CC5TB

NECK	10 x 10	22 x 10	22 x 22	22 x 46
MODULE	12 x 12	24 x 12	24 x 24	24 x 48

METALAIRE

Lay-in Egg Crate Return Air Filter Grille

- ◆ Aluminum $\frac{1}{2}$ " x $\frac{1}{2}$ " x $\frac{1}{2}$ " Grid
- ◆ 1" Filter Rack
- ◆ White Finish



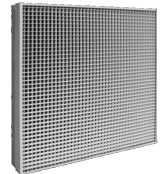
Model CC5FTB

FILTER RACK	20 x 20	44 x 20
MODULE	24 x 24	48 x 24

LIGHTNING, INC

Lay-in Plastic Egg Crate

- ◆ Plastic $\frac{1}{2}$ " x $\frac{1}{2}$ " x $\frac{1}{2}$ " Grid
- ◆ White Finish



Model PEC

MODULE SIZE	
24 x 24	24 x 48

METALAIRE

Door Grille

- ◆ Aluminum Construction
- ◆ Sight-proof Core, with Inverted "V" Shaped Louvers
- ◆ 1 $\frac{1}{4}$ " Flat Border, on Both Sides
- ◆ White Finish
- ◆ **Available in Aluminum Finish



Model DGDF

WIDTH X HEIGHT				
12 x 08*	16 x 16	18 x 12	20 x 20	24 x 12
12 x 12**		18 x 18	20 x 30	24 x 18
		18 x 24		24 x 24
				24 x 30



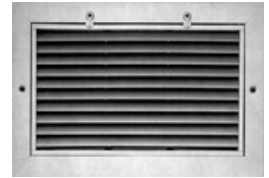
METALAIRE

Return Air Filter Grille

- ◆ Aluminum Construction
- ◆ Lay-in or Surface Mount
- ◆ Hinged Face with ¼ Turn Thumb Latches
- ◆ Uses 1" Filters

Available Accessories

Fiberglass Filters, 1"
Select sizes



Surface Mount, White Finish

Model RHF

WIDTH X HEIGHT									
12 x 12	16 x 20	18 x 18	20 x 16	24 x 10	25 x 16	30 x 10	32 x 20	36 x 12	48 x 24
12 x 18	16 x 25	18 x 24	20 x 20	24 x 12	25 x 20	30 x 12	32 x 25	36 x 18	
12 x 24		18 x 30	20 x 25	24 x 16	25 x 25	30 x 14		36 x 24	
12 x 30		18 x 36	20 x 30	24 x 24	25 x 32	30 x 16			
12 x 36			20 x 32	24 x 30		30 x 18			
			20 x 40	24 x 36		30 x 20			
				24 x 48		30 x 24			

Lay-in, White Finish - Model RHFTB

FILTER RACK	20 x 20	44 x 20
MODULE	24 x 24	48 x 24

USAIRE

Filter Grille

- ◆ Stamped Steel Construction
- ◆ Lay-in or Surface Mount
- ◆ Uses 1" Filters
- ◆ Flush Latches
- ◆ White Finish

Available Accessories

Fiberglass Filters, 1"
Select sizes



Surface Mount

Model 1410F

WIDTH X HEIGHT									
12 x 12	14 x 25	16 x 16	18 x 18	20 x 20	24 x 12	25 x 16	30 x 10*	32 x 20	36 x 24
12 x 24		16 x 20	18 x 36	20 x 25	24 x 18	25 x 20		32 x 25	
12 x 36		16 x 25		20 x 30	24 x 24	25 x 25			
				20 x 32		25 x 32			

Lay-in - Model 1410FTB

FILTER RACK	20 x 20
MODULE	24 x 24

USAIRE

Lay-in Filter Grille
Model **1420F**

- ◆ Stamped Steel Construction
- ◆ R-6 Ductboard Plenum Back
- ◆ Uses 1" Filters 20x20
- ◆ White Finish
- ◆ Standard 24 x 24 Module

Available Accessories
100B Collars
Fiberglass Filters, 1"



USAIRE

Radial Shutter Damper

- ◆ Steel Construction
- ◆ Screwdriver Adjustable
- ◆ Mill Finish



Model RSD

DIAMETER			
06	08	10	12

METALAIRE

Butterfly Damper

- ◆ Galvanized Steel Construction
- ◆ Mill Finish

Available Accessories
BDSTH Plastic Handles



Model BDS

DIAMETER				
06	08	10	12	14

METALAIRE

Opposed Blade Damper for 5000 Series Diffusers

- ◆ Steel Construction
- ◆ Mill Finish

Model D5

WIDTH X HEIGHT				
06 x 06	09 x 09	12 x 12	15 x 15*	18 x 18



METALAIRE

Opposed Blade Damper for 7000 Series Diffusers

- ◆ Steel Construction
- ◆ Mill Finish

Model D7

WIDTH X HEIGHT			
06 x 06	10 X 10	12 x 12	22 X 22



METALAIRE

Opposed Blade Damper
Model OBD

- ◆ Steel Construction
- ◆ Screwdriver Slot Operator
- ◆ Mill Finish

Model OBD

WIDTH X HEIGHT				
06 x 06	08 x 08	10 x 10	12 x 12	22 x 22



METALAIR

Single Duct Air Terminal Unit

Models TH5

- ◆ Galvanized Steel Casing
- ◆ Double Layer Galvanized Steel Damper
- ◆ ½" Thick, Dual Density Fiberglass Insulation
- ◆ VAV or Constant Volume Applications
- ◆ AHRI Certified and Shipped with AHRI Seal
- ◆ Uses Multi-Quadrant Averaging Flow Sensor
TH500: Controls by Others



Size	Inlet Size	Width	Height	Weight (lb.)	CFM Range
6	5 7/8	12	6	12	0—600
8	7 7/8	12	10	15	0—1100
10	9 7/8	14	12 1/2	18	0—1700
12	11 7/8	16	15	22	0—2500

TH-500 single duct air terminals are designed to regulate the flow of conditioned air in single duct air distribution systems. Its basic components are an insulated sheet metal box, round inlet damper, flow measuring device, and rectangular outlet. The unit is served by a central air handler and modulates the amount of 'primary' cooling air to the space between a minimum set point and the design airflow.

Inlet Size	CFM	Min Ps in W.G.	Discharge Sound Power			Radiated Sound Power		
			ΔPs = 0.50 in W.G. NC	ΔPs = 1.0 in W.G. NC	ΔPs = 3.0 in W.G. NC	ΔPs = 0.50 in W.G. NC	ΔPs = 1.0 in W.G. NC	ΔPs = 3.0 in W.G. NC
6	100	0.005	<15	16	21	<15	<15	<15
	200	0.020	17	18	23	<15	<15	<15
	300	0.045	16	19	24	17	19	23
	400	0.080	18	20	26	20	22	26
	500	0.136	22	25	29	22	24	29
	600	0.180	26	27	32	24	26	31
8	200	0.000	17	22	25	<15	<15	<15
	300	0.001	16	22	25	<15	16	19
	600	0.003	22	28	30	<15	21	29
	700	0.005	25	29	33	17	23	31
	1000	0.008	28	33	37	22	29	37
	1100	0.009	29	34	38	23	30	38
10	300	0.002	<15	20	22	<15	<15	17
	600	0.009	16	24	27	<15	20	25
	800	0.013	19	26	28	15	21	32
	1000	0.018	20	26	29	16	22	38
	1100	0.021	21	27	31	18	24	39
	1400	0.028	28	33	35	24	27	41
	1700	0.036	33	38	41	27	31	44
12	430	0.000	<15	<15	16	<15	<15	18
	800	0.001	<15	15	18	<15	19	31
	1450	0.008	15	21	25	17	24	38
	1600	0.010	16	24	28	20	25	38
	1950	0.015	18	26	33	24	26	41
	2200	0.022	18	27	34	25	27	41
	2500	0.025	19	28	35	26	31	43

LOREN COOK COMPANY

Down blast Centrifugal Exhaust Ventilator

Model ACED

- ◆ Roof Mounted
- ◆ Direct Drive
- ◆ Hurricane Rated

Model ACED Centrifugal Exhaust fans are direct driven fans designed for roof-mounted applications exhausting relatively clean air. They feature a spun aluminum housing and a non-overloading, backward-inclined aluminum wheel. Motors are enclosed in a weather-tight compartment, separated from the exhaust airstream. Model ACED fans are UL-listed and licensed to bear the AMCA Certified Ratings Seals for air and sound performance.

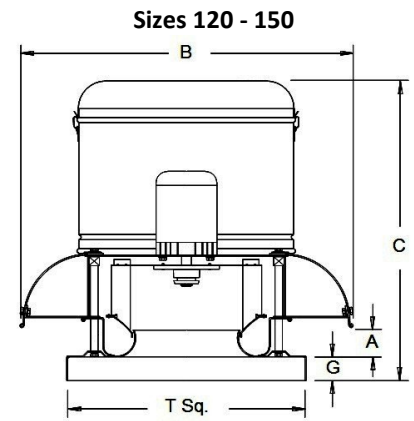
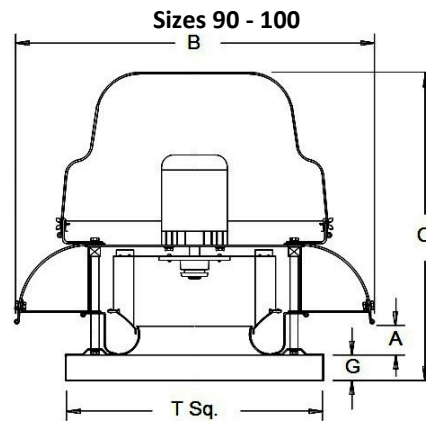


Items Included with Unit

115/60/1 Motor
Pre-wired Disconnect Switch
Speed Control
Backdraft Damper

Available Accessories

Roof Curb (RCG)
120V Power Pack for Backdraft Damper (715473)
Backdraft Dampers 12x12 and 14x14 (BD12 and BD14)



*All dimensions in inches. All weights in pounds.

Size	A	B	C	D	T Sq.	Roof Open. Sq.	Ship. Wt.	Stock Curb Size
90	2 1/2	18 3/4	16 13/16	2	18	13 1/2	28	16.5 x 16.5
100	2 1/2	18 3/4	16 13/16	2	18	13 1/2	30	16.5 x 16.5
120	1 7/16	28 7/16	26 9/16	2	20	15 1/2	67	18.5 x 18.5
135	1 15/16	28 7/16	27 1/16	2	20	15 1/2	72	18.5 x 18.5
150	2 13/16	32 7/8	28 11/16	2	24	19 1/2	87	22.5 x 22.5

Model Number	Mtr. HP	Fan RPM	Tip Speed	Max. Watts	0.00" SP		0.125" SP		0.250" SP		0.375" SP		0.500" SP		0.625" SP		0.750" SP		0.875" SP		1.000" SP	
					Sone	BHP	Sone	BHP	Sone	BHP	Sone	BHP	Sone	BHP	Sone	BHP	Sone	BHP	Sone	BHP	Sone	BHP
ACED090	1/8	1550	3658	148	865		759		650		509		411		289		131					
					9.1		9.1		8.9		8.4		8.0		7.6		7.2					
ACED100	1/8	1550	4061	194	967		856		766		667		552		444		384		265			
					11.0		11.0		10.8		10.7		10.5		10.4		10.2		10.1			
ACED120	1/4	1550	4869	-	1661		1596		1531		1463		1392		1324		1252		1154		959	
					12.4	.23	12.4	.23	12.4	.24	12.2	.25	12.0	.26	11.6	.27	11.3	.27	10.9	.27	10.6	.25
ACED135	1/2	1550	5478	-	2364		2292		2219		2144		2066		1987		1910		1833		1744	
					15.8	.41	15.8	.42	15.8	.43	15.7	.44	15.5	.46	15.3	.48	15.0	.48	14.6	.48	14.3	.48
ACED150	3/4	1550	6087	-	3243		3163		3082		3000		2916		2829		2741		2655		2570	
					19.6	.69	19.6	.70	19.5	.71	19.6	.73	19.4	.75	19.2	.78	19.0	.80	18.6	.82	18.3	.82

LOREN COOK COMPANY

Down blast Centrifugal Exhaust Ventilator

Model ACEB

- ◆ Roof Mounted
- ◆ Belt Drive
- ◆ Hurricane Rated



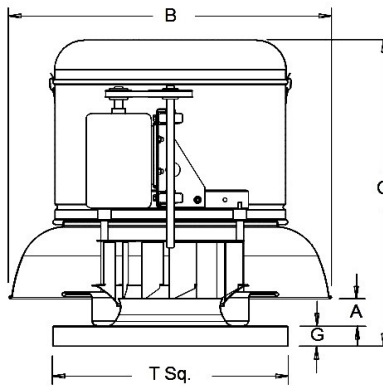
Model ACEB Centrifugal Exhaust fans are belt driven fans designed for roof-mounted applications exhausting relatively clean air. They feature a spun aluminum housing and a non-overloading, backward-inclined aluminum wheel. Motors are enclosed in a weather-tight compartment, separated from the exhaust airstream. Model ACEB fans are UL-listed and licensed to bear the AMCA Certified Ratings Seals for air and sound performance.

Items Included with Unit

115/60/1 Motor
Pre-wired Disconnect Switch
Backdraft Damper

Available Accessories

Roof Curb (RCG)
120V Power Pack for Backdraft Damper
(715473)
Backdraft Dampers 12x12 and 14x14
(BD12 and BD14)



*All dimensions in inches. All weights in pounds.

Size	A	B	C	D	T Sq.	Roof Open. Sq.	Ship. Wt.	Stock Curb Size
70	2 ⁷ / ₈	23 ⁹ / ₁₆	21 ¹ / ₈	2	18	13 ¹ / ₂	30	16.5 x 16.5
100	2 ⁷ / ₈	23 ⁹ / ₁₆	21 ¹ / ₈	2	18	13 ¹ / ₂	30	16.5 x 16.5
120	1 ¹³ / ₁₆	28 ⁷ / ₁₆	26 ⁷ / ₈	2	20	15 ¹ / ₂	55	18.5 x 18.5
135	2 ³ / ₁₆	28 ⁷ / ₁₆	27 ¹ / ₄	2	20	15 ¹ / ₂	60	18.5 x 18.5
150	3 ¹ / ₁₆	32 ⁷ / ₈	28 ⁷ / ₈	2	24	19 ¹ / ₂	70	22.5 x 22.5
180	3 ¹⁵ / ₁₆	37 ¹¹ / ₁₆	34 ¹ / ₂	3	30	25 ¹ / ₂	90	28.5 x 28.5

Model Number	Mtr. HP	Fan RPM	Tip Speed	0.00" SP		0.125" SP		0.250" SP		0.375" SP		0.500" SP		0.625" SP		0.750" SP		0.875" SP	
				Sone	BHP	Sone	BHP	Sone	BHP	Sone	BHP	Sone	BHP	Sone	BHP	Sone	BHP	Sone	BHP
ACEB070	¹ / ₄	1878	4916	411		387		363		340		313		283		256		226	
				15.1	.23	14.9	.22	14.6	.22	14.4	.22	14.1	.22	13.8	.22	13.5	.21	13.1	.22
ACEB100	¹ / ₄	1950	5105	1103		1056		1012		972		933		889		836		769	
				13.7	.19	13.7	.20	13.7	.20	13.5	.21	13.3	.21	13.2	.22	13.1	.22	12.9	.22
ACEB120	¹ / ₃	1669	5243	1788		1729		1668		1606		1541		1476		1413		1345	
				13.8	.28	13.8	.29	13.8	.30	13.7	.31	13.5	.32	13.3	.33	12.9	.34	12.6	.33
ACEB135	¹ / ₃	1306	4615	1992		1906		1818		1726		1633		1541		1428		1221	
				12.3	.24	12.3	.25	12.3	.26	12.1	.28	11.8	.29	11.4	.29	11.1	.29	10.7	.28
ACEB150	¹ / ₂	1320	5183	2762		2668		2572		2473		2370		2269		2169		2059	
				15.6	.43	15.6	.44	15.6	.45	15.4	.47	15.2	.49	14.9	.50	14.5	.51	14.1	.50
ACEB180	¹ / ₂	942	4439	3430		3281		3123		2960		2787		2594					
				12.4	.42	12.4	.44	12.1	.46	11.7	.48	10.9	.49	10.2	.50				

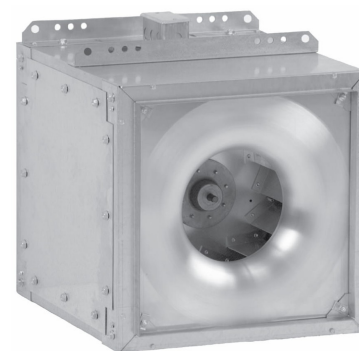
LOREN COOK COMPANY

Square Inline Centrifugal Supply Fan

Model **SQNDEC**

- ◆ Duct Mounted
- ◆ Direct Drive
- ◆ Electronically Commutated Motor

Model SQND-EC Square Inline fans are direct driven fans designed for inline applications. They feature a galvanized steel housing with integral duct collars and a centrifugal, backward-inclined aluminum wheel. Motors are totally enclosed electronically commutated motors, rated for continuous duty and furnished with a fan-mounted speed controller. Model SQND-EC fans are UL-listed and licensed to bear the AMCA Certified Ratings Seals for air and sound performance.



Items Included with Unit

115/60/1 Motor

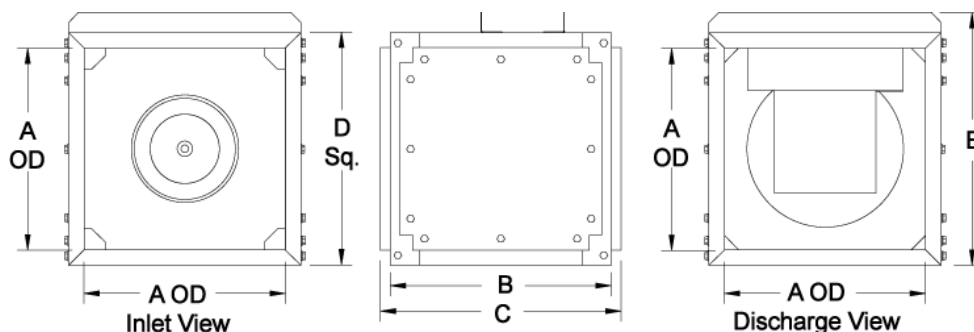
Pre-wired Disconnect Switch

Backdraft Damper

Fan Mounted Speed Control

Available Accessories

Rubber In-shear Ceiling Isolators (RC75)



**All dimensions in inches. All weights in pounds.*

Size	A	B	C	D Sq.	E	Inlet and Rear Discharge Duct Size (ID)	Ship. Wt.
70	10	12	14	12	13 ⁹ / ₁₆	10 sq.	70
90	12	15	17	14	13 ⁹ / ₁₆	12 sq.	90
100	12	20	22	14	13 ⁹ / ₁₆	12 sq.	100
120	16	20	22	18 ⁷ / ₁₆	20	16 sq.	125
135	18	20 ¹ / ₄	22 ¹ / ₄	20 ³ / ₄	22 ⁵ / ₁₆	18 sq.	150

Model Number	Mtr. HP	Fan RPM	Tip Speed	Max. Watts	CFM vs. Static Pressure									
					0.00" SP	0.125" SP	0.250" SP	0.375" SP	0.500" SP	0.625" SP	0.750" SP	0.875" SP	1.000" SP	
SQNDEC070	¼	1725	3160	49	266	201	147	103						
SQNDEC090	¼	1725	4064	129	686	613	550	475	403	315				
SQNDEC100	¼	1725	4516	134	926	880	829	772	712	632	495			
SQNDEC120	½	1725	5419	354	1733	1664	1599	1540	1483	1421	1342	1239	1123	
SQNDEC135	¾	1725	6096	630	2534	2454	2374	2294	2213	2132	2048	1960	1866	

LOREN COOK COMPANY

Spun Aluminum Gravity Ventilator

Model **PR**

- ◆ Roof Mounted
- ◆ Spun Aluminum Construction



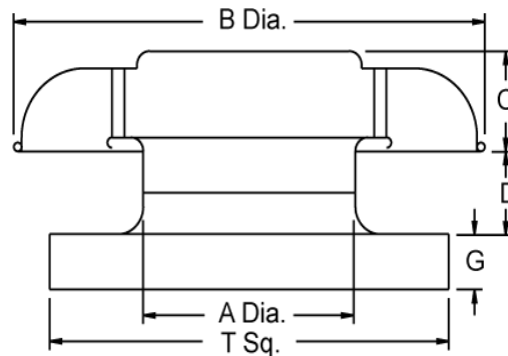
Model PR Gravity Ventilator are intake/relief vents designed for use in both gravity and mechanical ventilation systems. They feature spun aluminum structural components bolted to a rigid aluminum support structure.

Items Included with Unit

Bird screen

Available Accessories

Roof Curb (RCG)



Size	A	B	C	D	G	T Sq.	Roof Open. Sq.	Ship. Wt.	Stock Curb Size
12	12 ½	27 ¾	5 ⅙	3 ½	2	20	15 ½	20	18.5 x 18.5
16	16 ½	27 ¾	5 ⅙	5 ¾	2	28	23 ½	25	26.5 x 26.5

Relief Performance Data

Size	Throat Area (Sq. Ft.)	Face Area (Sq. Ft.)	Pressure Drop (in WG)								
			0.05	0.1	0.125	0.15	0.2	0.25	0.3	0.375	0.5
			CFM								
12	0.852	2.04	445	629	703	770	889	994	1089	1218	1406
16	1.485	3.08	786	1112	1243	1362	1573	1758	1926	2154	2487

LOREN COOK COMPANY

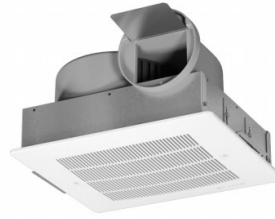
Centrifugal Ceiling/Wall Cabinet Fan Model GC

Model GC Centrifugal Cabinet fans are direct driven fans designed for ceiling, wall, or inline-mounted applications exhausting relatively clean air. Model GC fans are UL-listed and licensed to bear the AMCA Certified Ratings Seals for air and sound performance. Models GC128, GC222 and GC242 are **ENERGY STAR®** certified products.



GC128—GC188

- ♦ Injection molded resin housing and a forward curved injection molded resin wheel.
- ♦ Motor is an open drip proof type that is isolation mounted to a galvanized stamped steel integral motor mount.



Items Included with Unit
115/60/1 Motor
Standard Plug Disconnect
White Grille
Backdraft Damper

Model	Grille Type	Face Size	Discharge
GC128	PLASTIC	13 ¼ x 15 ½	5 13/16
GC148	PLASTIC	13 ¼ x 15 ½	5 13/16
GC168	PLASTIC	13 ¼ x 15 ½	5 13/16
GC188	PLASTIC	13 ¼ x 15 ½	5 13/16

Available Accessories
Inline Adaptor
(GCADAP)
Speed Control
(57 and 72)
White Replacement Grille
(615196)

GC222—GC322

- ♦ Galvanized steel and acoustically insulated housing with a forward curved galvanized steel wheel.
- ♦ Motor is an open drip proof type that is mounted on vibration isolators.



Model	Grille Type	Face Size	Discharge
GC222	STEEL	16 ¾ x 13 ⅝	8 x 6
GC242	STEEL	16 ¾ x 13 ⅝	8 x 6
GC322	STEEL	16 ¾ x 13 ⅝	8 x 6

Performance shown without speed controller.

Model Number	Max Watts	RPM	HVI Sones	0.00" SP		0.100" SP		0.125" SP		0.250" SP		0.375" SP		0.500" SP		0.625" SP		0.750" SP		0.875" SP		1.00" SP	
				CFM	Sones	CFM	Sones	CFM	Sones	CFM	Sones	CFM	Sones	CFM	Sones	CFM	Sones	CFM	Sones	CFM	Sones	CFM	Sones
GC128	64	900	1.1	81	1.5	80	1.6	79	1.6	77	1.7	73	2.1	67	2.7	59	3.3	49	4.2	32	5.2		
GC148	98	1100	2.0	139	2.8	133	2.9	131	2.9	124	3.0	117	3.2	108	3.4	97	3.7	84	4.2	65	4.8	42	5.5
GC168	145	1300	4.0	190	4.9	186	4.8	185	4.8	180	4.7	174	4.7	166	4.7	148	4.7	131	4.7	110	5.1	78	5.5
GC188	220	1500	6.0	262	7.7	255	7.6	253	7.5	244	7.4	234	7.2	222	7.1	207	6.9	189	6.6	166	6.3	143	6.1
GC222	39	1050	0.8	120	1.2	107	1.2	104	1.1	73	1.3												
GC242	65	1200	1.3	147	2.2	130	1.9	126	1.9	99	1.5												
GC322	75	1365	3.0	217	4.4	205	4.1	202	4.1	182	3.8												148

BROAN

High Capacity Ventilation Fan

Available Accessories
Replacement Grilles
Speed Control (57 and 72)
Inline Adaptors

- ◆ Duct Horizontally or Vertically, or Inline with a Separate Adapter
- ◆ Impact Resistant Blower Wheel
- ◆ 120 V, Single Phase, 60 Hz Motor

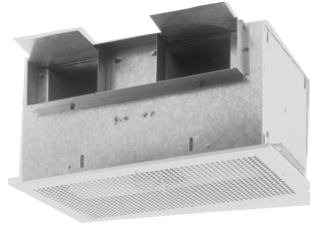
- ◆ Standard Plug Disconnect
- ◆ Backdraft Damper
- ◆ Galvanized Steel Housing

Models:
L100, L150, L200, L250, L300



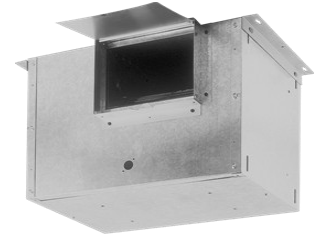
- ◆ 14" x 14" face size
- ◆ White plastic grille
- ◆ 6" duct for L100—L150
- ◆ 8" duct for L200—L300

Models:
L400, L500, L700



- ◆ 23 1/4" x 14" face size
- ◆ White steel grille
- ◆ 18 1/2" x 4 1/2" duct size

Model:
L900



- ◆ 23 7/8" x 19 7/8" face size
- ◆ White steel grille
- ◆ 12" x 8" duct size

Catalog Number	Max Watts	RPM @ .125"	Max. Amps @60 Hz	0.00" SP		0.100" SP		0.125" SP		0.250" SP		0.375" SP		0.500" SP		0.625" SP		0.750" SP		0.875" SP		1.00" SP	
				CFM	Sones	CFM	Sones	CFM	Sones	CFM	Sones	CFM	Sones	CFM	Sones	CFM	Sones	CFM	Sones	CFM	Sones	CFM	Sones
L100	87	640	1.1	136	0.5	115	0.8	109	0.9	93	1.3	80	1.8	65	2.3	44	3.0	12	3.2				
L150	100	710	1.3	181	1.3	161	1.4	157	1.5	141	2.2	132	2.6	124	3.1	114	3.6	94	4.1	62	4.6		
L200	127	740	1.8	231	1.6	214	1.8	210	1.7	196	2.3	186	2.9	177	3.5	165	4.1	144	4.9	113	5.3	51	5.3
L250	166	830	2.1	272	2.1	261	2.3	259	2.2	250	2.9	242	3.3	233	3.9	218	4.4	201	4.8	165	5.5	99	5.8
L300	212	905	2.6	312	2.8	309	2.9	308	2.9	303	3.3	296	3.5	287	3.9	273	4.3	254	4.7	219	5.1	125	5.6
L400	146	735	1.4	480	2.0	442	2.4	434	2.3	388	2.8	344	3.3	299	3.8	229	4.5	182	4.8	114	5.4	33	5.6
L500	232	810	2.2	538	3.0	520	3.1	514	3.3	491	3.6	463	4.0	434	4.4	389	5.0	339	5.7	282	6.2	186	6.7
L700	313	960	2.9	722	4.5	704	4.6	701	4.7	667	4.8	640	5.0	607	5.2	571	5.6	534	6.2	453	7.1	333	7.2
L900	306	650	3.0	918	3.8	905	4.0	901	4.1	877	4.0	842	4.2	793	4.3	725	4.4	636	4.9	536	4.5	390	5.3

**Performance data with Inline Adapter*

L100	87	760	1.1	121	0.5	108	0.7	106	0.7	97	1.1	93	1.4	86	1.8	70	2.1	44	2.4	17	2.6		
L150	100	920	1.3	153	0.9	148	1.0	147	1.1	140	1.4	134	1.6	125	1.9	111	2.1	91	2.2	54	2.4	18	2.6
L200	127	865	1.8	205	1.7	196	1.9	195	1.9	190	2.1	185	2.3	175	2.4	158	3.0	135	3.3	96	3.4	47	3.4
L250	166	1005	2.1	248	2.0	245	2.3	245	2.3	241	2.6	235	2.8	224	3.2	208	3.4	183	3.6	141	3.9	84	3.8
L300	212	1145	2.6	300	2.9	294	3.0	293	3.1	285	3.3	274	3.4	259	3.5	243	3.6	214	3.7	168	4.0	113	3.9
L400	146	775	1.4	450	1.4	415	1.6	406	1.6	360	1.9	313	2.2	271	2.6	223	2.9	167	3.4	90	3.6	6.0	3.9
L500	232	890	2.2	546	2.4	526	2.4	519	3.4	496	3.7	472	3.9	447	3.8	407	3.9	364	4.0	306	4.3	232	4.3
L700	313	1090	2.9	704	3.6	686	3.8	681	3.7	656	3.9	631	4.0	604	4.2	575	4.3	533	4.4	480	4.7	412	5.0
L900	306	810	3.0	930	3.7	902	3.8	894	3.8	853	3.8	807	3.7	754	3.8	685	3.9	587	4.0	442	4.0	300	4.1

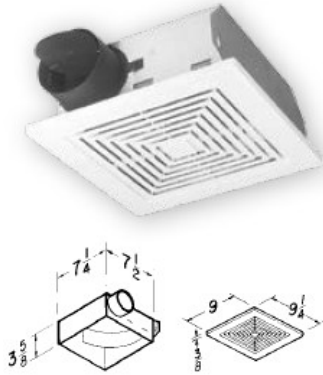
BROAN

Ceiling/Wall Ventilation Fan

Available Accessories
Replacement Grilles
Speed Controls (57 and 72)

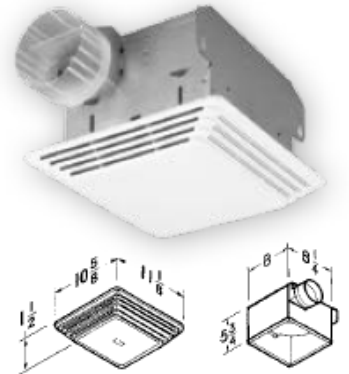
671 and 688

- ◆ Powerful centrifugal blower wheel
- ◆ Compact galvanized steel housing
- ◆ White polymeric face grille
- ◆ Wall or ceiling mount



A110

- ◆ Centrifugal blower wheel and 4-pole motor deliver high exhaust capacity at low sound levels
- ◆ Galvanized steel housing
- ◆ White polymeric face grille
- ◆ Ceiling mount



Model	Volts	Amps	Sones	CFM	Duct Size
688	120	0.9	4.0	50	3
671	120	1.15	6.0	70	3
A110	120	1.3	4.0	110	4

BROAN

Speed Controls Models 57 and 72

- ◆ White
- ◆ Model 57: 3 Amps
- ◆ Model 72: 6 Amps



BROAN / LOREN COOK COMPANY

Inline Adapters



Model	961L	981L	982L	983L	GCADAP
Fan	L100, L150	L200, L250, L300	L400, L500, L700	L900	GC124—GC184
Manufacturer	Broan	Broan	Broan	Broan	Cook

BROAN / LOREN COOK COMPANY

White Replacement Grilles

Model	Fan	Manufacturer
97011723	688, 671	Broan
97009347	A110	Broan
99110807	L100—L300	Broan
615196	GC124- 340	Cook

BROAN

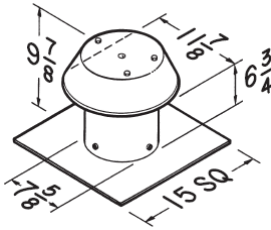
Roof Cap

Available Accessories

CURB14 Roof Curb

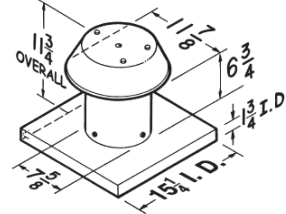
CURB16 Roof Curb

Model 611



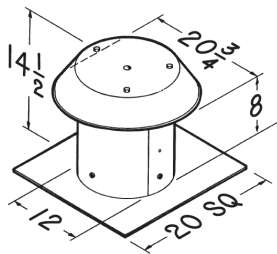
- ◆ For flat roof installation
- ◆ 0.025 Aluminum—natural finish
- ◆ Built-in bird screen
- ◆ For up to 8" round duct

Model 611CM



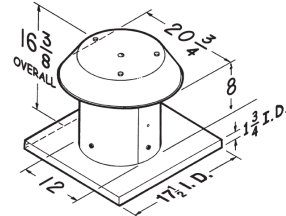
- ◆ For curb mount installation
- ◆ Fits CURB14 stock curb
- ◆ Other features same as Model 611

Model 612



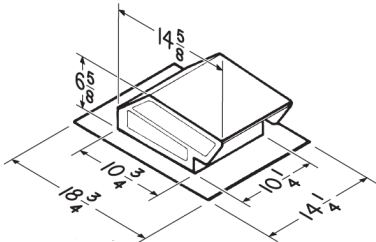
- ◆ For flat roof installation
- ◆ 0.025 Aluminum—natural finish
- ◆ Built-in bird screen
- ◆ For up to 12" round duct

Model 612CM



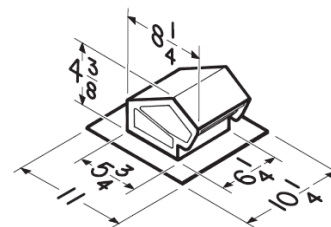
- ◆ For curb mount installation
- ◆ Fits CURB16 stock curb
- ◆ Other features same as Model 612

Model 634



- ◆ 24 gauge CRCQ steel, black electrically-bonded epoxy finish
- ◆ Built-in backdraft damper and bird screen
- ◆ For 3 1/4" x 10" or up to 8" round duct

Model 636



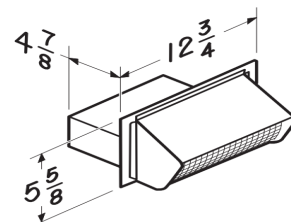
- ◆ 24 gauge CRCQ steel, black electrically-bonded epoxy finish
- ◆ Built-in backdraft damper and bird screen
- ◆ For 3" or 4" round duct

BROAN

Wall Vent

Model 639

- ◆ For 3 1/4" x 10" Duct
- ◆ Spring-Loaded Backdraft Damper
- ◆ Built-in Bird screen
- ◆ 24 Gauge CRCQ Steel, Black Electrically-Bonded Epoxy Finish



LEWIS & LAMBERT

Single Wall Spiral Pipe

- ◆ Gauge and Construction for Applications up to 10" W.G. of Positive Pressure

Pipe Dimension	Gauge of Metal		Construction		Duct/Duct Connection	Duct/Fitting Connection
	Spiral Pipe	Fittings	Spiral Pipe	Fittings		
3 - 14	26	24	Spiral Lockseam	Lap/Spot Seal	4" Coupling	2" Slip-Fit Collar
16 - 18	24	22	Spiral Lockseam	Lap/Spot Seal	4" Coupling	2" Slip-Fit Collar

Model	Description	Size							
SRSSD	Pipe—sold per 10' piece	04	06	08	10	12	14	16	18
SRSDC	Duct Coupling	04	06	08	10	12	14	16	18
SRSDEP	End Cap	04	06	08	10	12	14	16	18
SE90	Die Stamped 90°	04	06	08	10	12			
SE45	Die Stamped 45°	04	06	08	10	12			
SRSE590	Gored 90°						14	16	18
SRSE345	Gored 45°						14	16	18
SRSSR	Reducer		6 to 4	8 to 6	10 to 8	12 to 10	14 to 12	16 to 14	18 to 16

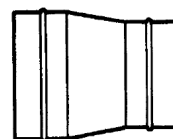
**Straight Lengths
SRSSD**



**Duct Coupling
SRSDC**



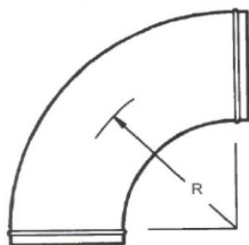
**Reducer
SRSSR**



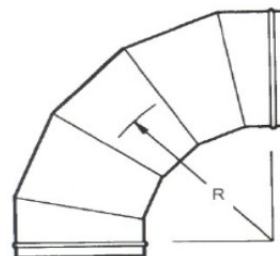
**End Cap
SRSDEP**



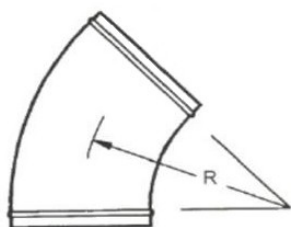
**90° Die Stamped Elbow—Long Radius
SE90**



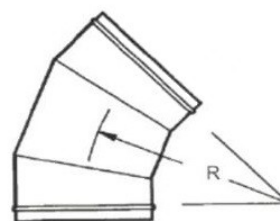
**90° Gored Elbow
SRSE590**



**45° Die Stamped Elbow—Long Radius
SE45**



**45° Gored Elbow
SRSE345**



AMERICAN METAL PRODUCTS

AmeriVent®

Double Wall Type B Gas Vent Pipe

- ◆ UL Listed
- ◆ Corrosion-resistant Galvanized Steel and Aluminum Double Wall Construction
- ◆ Snap-lock Coupling Ends
- ◆ Lightweight
- ◆ Flashing Fits 0/12 to 5/12 Pitch Roof

	3"	4"	5"	6"	7"	8"	9"	10"	12"	14"
6"L Pipe	03E06*									
12"L Pipe	03E12	04E12	05E12	06E12	07R12	08R12	09R12	10R12	12R12	14R12
18"L Pipe	03E18	04E18	05E18	06E18	07R18*	08R18	09R18	10R18	12R18	14R18
24"L Pipe	03E24	04E24	05E24	06E24	07R24	08R24	09R24	10R24	12R24	14R24
3'L Pipe	03E3	04E3	05E3	06E3	07R3	08R3	09R3	10R3	12R3	14R3
4'L Pipe	03E4	04E4	05E4	06E4	07R4					
5'L Pipe	03E5	04E5	05E5	06E5	07R5	08R5				
12"L Adj. Pipe	03E12A	04E12A	05E12A	06E12A	07R12A	08R12A				
18"L Adj. Pipe							09R18A	10R18A	12R18A	14R18A
90° Adj. Elbow	03EAL	04EAL	05EAL	06EAL	07RAL	08RAL				
45° Adj. Elbow	03E45	04E45	05E45	06E45	07R45	08R45	09R45	10R45	12R45	14R45
Tee	03ET	04ET	05ET	06ET	07RT	08RT	09RT*	10RT	12RT	14RT
Tee Cap					07RTC	08RTC	09RTC*	10RTC	12RTC	
Rain Cap	03EC	04EC	05EC	06EC	07RC	08RC	09RC	10RC	12RC	14RC
Draft Hood Conn.	03EDC	04EDC	05EDC	06EDC	07RDC	08RDC	09RDC*	10RDC	12RDC	
Vent Collar	03EVC	04EVC	05EVC	06EVC	07RVC	08RVC	09RVC	10RVC	12RVC	
Storm Collar	03ESC	04ESC	05ESC	06ESC	07RSC	08RSC	09RSC	10RSC	12RSC	14RSC
Flashing	03EF	04EF	05EF	06EF	07RF	08RF	09RF	10RF	12RF	14RF
Pipe Hanger		04VPH	05VPH	06VPH	07VPH					



Pipe



Adj. Pipe



Tee

Tee Cap



Adjustable Elbow



Storm Collar

Flashing



Rain Cap

Pipe Hanger



Vent Collar



Draft Hood Conn.



INCREASER	3"	4"	5"	6"	7"	8"	9"	10"	12"
4"	04X3EI								
5"	05X3EI	05X4EI							
6"	06X3EI	06X4EI	06X5EI						
7"	07X3EI*		07X5EI	07X6EI					
8"	08X4RI		08X5RI	08X6RI	08X7RI				
9"				09X6EI	09X7RI	09X8RI			
10"				10X6RI	10X7RI	10X8RI	10X9RI		
12"						12X8RI		12X10RI	
14"						14X8RI		14X10RI	14X12RI



Increaser

Product Application Guide			
Description:	Type "B" Gas Vent	Outside Diameter:	3" to 6" * 7" to 24" **
Application:	Listed gas appliance with a draft hood, or listed for Type "B" gas vent.	Insulation:	¼" air 3" to 6"
Fuel Types:	Natural or LP gas	Clearance to Combustibles:	1" (unenclosed chimney)
Exhaust Pressure:	Neutral or negative		
Exhaust Temperature: continuous/intermittent	400° Maximum	Clearance to Noncombustible:	½" or distances required to allow for proper installation and maintenance.
Diameter:	3" to 24"	Accepted by:	AGA, NFPA, HUD, NBC, UBC
Materials:	Inner: .012" aluminum 3" to 6" .014" aluminum 7" to 18" .018" aluminum 20" to 30" Outer: 26 ga galvanized Steel 3" to 24"	Listed By	Underwriters Laboratories, Inc.

*½" larger than listed size.

**1" larger than listed size.

M&M MANUFACTURING

Snap-Lock Pipe

Standard Gauges

- ◆ 3" to 12" diameter—30 gauge
- ◆ 14" to 18" diameter—28 gauge
- ◆ 20" + diameter—26 gauge

Straight Lengths—Model 100

5' LENGTHS										3' LENGTHS		
03	04	05	06	07	08	09	10	12	14	16	18	20



Adjustable 90° Elbow—Model 125

DIAMETER												
03	04	05	06	07	08	09	10	12	14	16	18	20



Tapered Round to Round Adapter—Model 400

DIAMETER X DIAMETER											
04 x 03	05 x 04	06 x 04 06 x 05	07 x 06	08 x 06 08 x 07	09 x 08	10 x 06 10 x 08 10 x 09	12 x 06 12 x 08 12 x 10	14 x 08 14 x 10 14 x 12	16 x 10 16 x 14	18 x 16	



Transition Boot—Model 201V

DUCT SIZE	DIMENSIONS
06	10"W x 3 1/4"H x 6" round
08	10"W x 3 1/4"H x 8" round
10	4 1/2"W x 18 1/2"H x 10" round



- ◆ Galvanized steel construction

Single Wall Flashing—Model J4

DIAMETER							
04	05	06	07	08	10	12	14

- ◆ For flat roof



Banded Cap Gravity Ventilator—Model BC

DIAMETER					
04	06	08	10	12	14



Vent Cap—Model VC

DIAMETER				
04	06	08	10	12



Wye Connectors—Model Y

TRUNK DIAMETER x BRANCH DIAMETERS				
04 x 04 x 04	06 x 04 x 04 06 x 06 x 06	07 x 06 x 06	08 x 06 x 06 08 x 07 x 06 08 x 07 x 07* 08 x 08 x 06 08 x 08 x 08	09 x 07 x 07
TRUNK DIAMETER x BRANCH DIAMETERS				
10 x 08 x 06 10 x 08 x 08 10 x 10 x 08 10 x 10 x 10	12 x 08 x 08 12 x 10 x 08 12 x 10 x 10	14 x 10 x 10 14 x 12 x 10 14 x 12 x 12	16 x 14 x 14	18 x 16 x 16



R-6 Insulated Grille Box—Model IB6

LENGTH x WIDTH x COLLAR						
06 x 06 x 05 06 x 06 x 06	08 x 04 x 04 08 x 04 x 05 08 x 04 x 06	08 x 06 x 06	08 x 08 x 06 08 x 08 x 07 08 x 08 x 08	10 x 06 x 06 10 x 06 x 08	10 x 08 x 06 10 x 08 x 07 10 x 08 x 08	10 x 10 x 06 10 x 10 x 08 10 x 10 x 09 10 x 10 x 10
LENGTH x WIDTH x COLLAR						
12 x 06 x 06 12 x 06 x 07 12 x 06 x 08	12 x 08 x 08	12 x 12 x 08 12 x 12 x 10 12 x 12 x 12	14 x 06 x 06 14 x 06 x 08	14 x 08 x 08 14 x 08 x 09	16 x 06 x 08 16 x 06 x 09	



- ♦ 4" tall without tabs
- ♦ 1 ½" R-6 duct liner

Wall Vent—Model WV

DIAMETER				
03	04	06	08	10



- ♦ 3" to 6": Aluminum construction
- ♦ 8" to 10": Galvanized steel construction
- ♦ Bird screen available on 8" and 10"
- ♦ Damper included

DACE MANUFACTURING

Adapters, Extension Collars, and Ductboard Collars

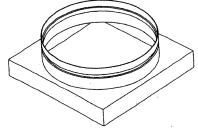
Round to Round Adapters: 2" Deep with 2" Collar— Model 265

DIAMETER X DIAMETER				
06 x 04	08 x 06	10 x 06	12 x 10	14 x 12
06 x 05	08 x 07	10 x 08		
		10 x 09		



Square to Round Adapters: 2" Deep with 2" Collar—Model SR2

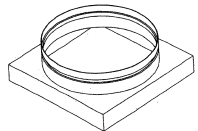
INLET						
08	10	12	14	16	18	20



♦ 22" x 22" base

Square to Round Adapters: 4" Deep with 2" Collar—Model SR4

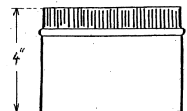
LENGTH x WIDTH x COLLAR				
06 x 06 x 06	08 x 08 x 06	09 x 09 x 06	10 x 10 x 06	12 x 12 x 08
	08 x 08 x 08	09 x 09 x 07	10 x 10 x 08	12 x 12 x 09*
		09 x 09 x 08	10 x 10 x 10	12 x 12 x 10
		09 x 09 x 09		12 x 12 x 12



LENGTH x WIDTH x COLLAR				
14 x 14 x 10	15 x 15 x 10	18 x 18 x 06	20 x 20 x 14	22 x 10 x 06
14 x 14 x 12	15 x 15 x 12	18 x 18 x 08	20 x 20 x 16	22 x 10 x 08
14 x 14 x 14	15 x 15 x 14	18 x 18 x 10	20 x 20 x 18	22 x 10 x 10
		18 x 18 x 12		
		18 x 18 x 14		
		18 x 18 x 16		
		18 x 18 x 18		

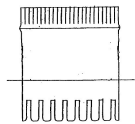
Extension Collars: 4" Deep—Model EXT

DIAMETER					
06	08	10	12	14	16



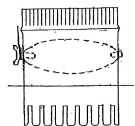
Ductboard/Dovetail Collar - Model 100B

DIAMETER								
06	08	09	10	12	14	16	18	20



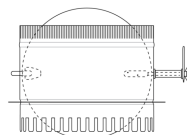
Ductboard Collar with Damper - Model 100DB

DIAMETER										
05	06	07	08	09	10	12	14	16	18	20



Ductboard Collar with Damper and Build-out - Model DBSCS

DIAMETER					
06	08	10	12	14	16



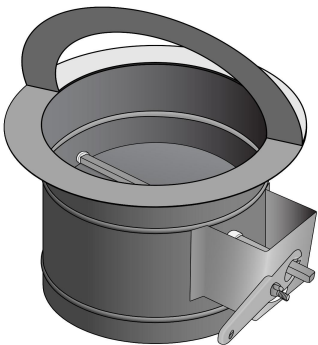
DACE MANUFACTURING

Stick-On Collars

◆ 26/24 Standard Gauge Galvanized Steel

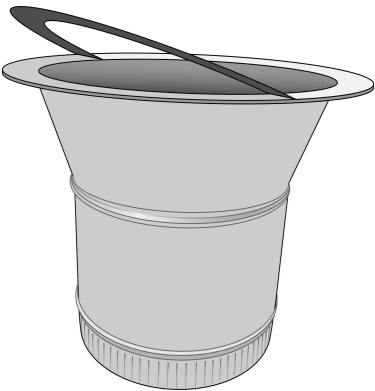
Model FTD3- Stick-On Flange Collar with 2” Build-Out and Gasket

DIAMETER				
06	08	10	12	14



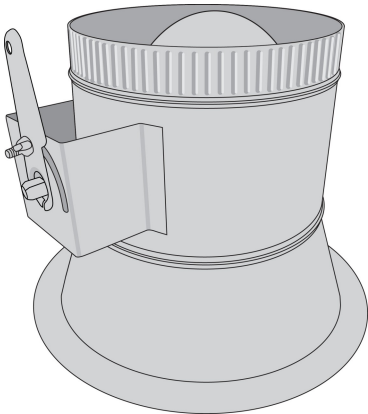
Model CBFG- Conical Stick-On Flange Collar with Gasket

DIAMETER				
06	08	10	12	14



Model CBFGD3-Conical Stick-On Flange Collar with 2” Build-out and Gasket

DIAMETER				
06	08	10	12	14



PEPPERTREE AIR SOLUTIONS

Sheet Metal Fittings

- ◆ 26/24 Standard Gauge Galvanized Steel
- ◆ 24/22 Gauge Galvanized Steel for Conical Collars
- ◆ Union Made

MODEL	DIAMETER							
CS		06	08	10	12	14	16	18
CSD3		06	08	10	12	14		
SOC		06	08	10	12	14	16	
SOCD	04	06	08	10	12	14	16	18
SOCD1		06	08	10	12	14	16	18
SOCD3		06	08	10	12	14	16	
SLD3		06	08	10	12	14		

Conical Spin-In Collars

Model CS

- ◆ 7.5" overall body length
- ◆ 1" expanded radius



Model CSD3

- ◆ 10" overall body length
- ◆ 1" expanded radius
- ◆ 2" build-out
- ◆ 3/8" square rod, U bolt, nylon bushing, and locking quadrant



Spin-In Collars

Model SOC

- ◆ Spin-in collar without damper

Model SOCD

- ◆ With damper



Model SOCD1

- ◆ With damper
- ◆ 2" build-out, shaft extender, cover, and handle



Model SOCD3

- ◆ With damper
- ◆ 2" build-out
- ◆ 3/8" square rod, U bolt, nylon bushing, and locking quadrant

Connecting Collars

Model SLD3

- ◆ With damper
- ◆ 2" build-out, shaft extender, cover, and handle
- ◆ 3/8" square rod, U bolt, and nylon bushing

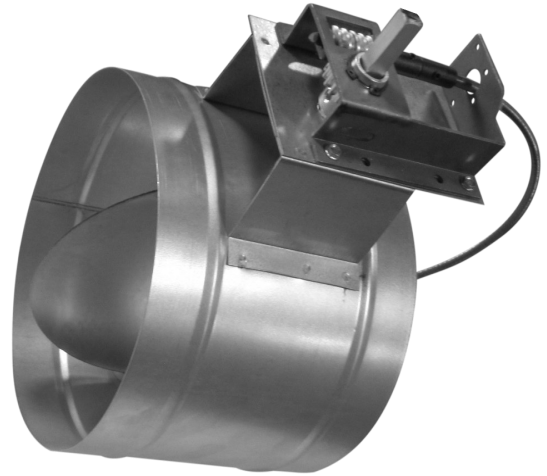


DACE MANUFACTURING

Round Manual Balancing Damper with Cable

- ◆ 26 Gauge Steel
- ◆ 3ft Cable with 2 Connectors
- ◆ Damper Blade Secured to 3/8" Square Axle Rod
- ◆ Nylon End Bearings with U Bolt
- ◆ Additional Cable Available Per Ft-Model CABLE

Model RMBD		
DIAMETER		
08	10	12



Don't see what you're looking for?
Ask us about our special order options!

PEPPERTREE AIR SOLUTIONS

Flexible Duct

Non-Insulated - Model D

DIAMETER					
04	06	08	10	12	14

- ◆ High pressure rated vinyl-coated fiberglass cloth
- ◆ 20" WC positive pressure

High Pressure R-6 Insulated - Model CM

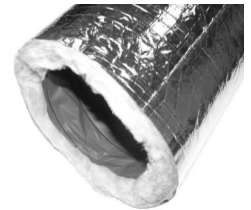
DIAMETER					
06	08	10	12	14	16

- ◆ High pressure rated with a reinforced trilaminate core
- ◆ Reinforced metalized vapor barrier
- ◆ 20" WC positive pressure

Acoustic R-6 Insulated - Model HM

DIAMETER							
06	08	10	12	14	16	18	20*

- ◆ Medium pressure rated with a spirally wound CPE core
- ◆ Reinforced metalized vapor barrier
- ◆ Acoustic rated
- ◆ 6" WC positive pressure



ATCO

Flexible Duct

- ◆ UL-181 Class 1 Air Ducts (only Models 036 and 031)

R-6 Insulation - Model 036

DIAMETER											
04	05	06	07	08	09	10	12	14	16	18	20

- ◆ Tri-directional fiberglass scrim reinforced, metalized polyester outer jacket around insulated core
- ◆ 6" W.G. positive pressure for 4" - 12" diameters and 4" W.G. positive pressure for 14" - 20" diameters
- ◆ 25' lengths



R-8 Insulation - Model 031

DIAMETER								
06	07	08	09	10	12	14	16	18

- ◆ Tri-directional fiberglass scrim reinforced, metalized polyester outer jacket around insulated core
- ◆ 6" W.G. positive pressure for 4" - 12" diameters and 4" W.G. positive pressure for 14" - 20" diameters

Non-insulated - Model 020

DIAMETER									
03	04	05	06	07	08	09	10	12	14

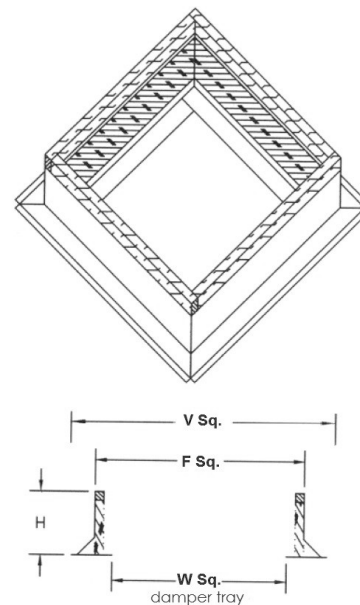
- ◆ Corrugated aluminum
- ◆ 6" W.G. positive pressure
- ◆ 8' lengths



COMPLETE CURB PRODUCTS

Roof Curb

- ◆ 18 Gauge Steel Construction with 1 ½", 3lbs Insulation
- ◆ 3" Cant Strip
- ◆ Damper Tray
- ◆ 1 ½" Wood Nailer
- ◆ Continuously Welded Corners, Prepared and Coated with Corrosion Inhibiting Compound



CURB MODEL	FOR USE WITH FAN MODEL#:	F SQ.	V SQ.	W SQ.	ROOF OPENING	CURB HEIGHT
RCG16	ACEB 070, ACED090, ACED100	16 ½	20 ½	9 ¾	13 ½	12
RCG18	ACED120, ACED135, PR12	18 ½	22 ½	11 ¾	15 ½	12
RCG22	ACED150	22 ½	26 ½	15 ¾	19 ½	12
RCG26	PR16	26 ½	30 ½	19 ¾	23 ½	12
RCG28	ACEB180	28 ½	32 ½	21 ¾	25 ½	12

CURB MODEL	FOR USE WITH BROAN ROOF CAP#:	DAMPER TRAY SQ.	CURB HEIGHT
CURB1414	Broan 611CM	9	8
CURB1616	Broan 612CM	11	8

JL INDUSTRIES

Access Doors

Available Accessories

LOCKJL Cylinder Lock

KEY Spare Key for Lock

Fire-rated - Model FD

DOOR SIZE (WIDTH x HEIGHT)								
08 x 08	12 x 12	16 x 16	18 x 18	22 x 30	24 x 24	24 x 36	30 x 30	36 x 36

- ♦ 2-hr fire rated-for walls and ceilings
- ♦ Frame is 16 gauge steel, 1" flange
- ♦ Flush door is 20 gauge steel, 2" thick with continuous hinge
- ♦ Universal turn ring and key lock
- ♦ For wall and ceiling opening $\frac{5}{8}$ " larger than door size
- ♦ White powder coat finish



General Purpose, Screwdriver Cam Latch - Model TM

DOOR SIZE (WIDTH X HEIGHT)									
06 x 06	08 x 08	10 x 10	12 x 12	16 x 16	18 x 18	20 x 24	24 x 24	30 x 30	36 x 36
			12 x 16	16 x 20			24 x 30		
			12 x 18				24 x 36		
							24 x 48		

Cylinder Lock - Model TML

DOOR SIZE (WIDTH X HEIGHT)		
12 x 12	24 x 24	24 x 36



Stainless Steel - Model TMS

DOOR SIZE
12 x 12

- ♦ For use with masonry, tile, wallboard, etc
- ♦ Frame is 16 gauge steel, 1" flange
- ♦ Flood door is 16 gauge steel with 90° continuous, concealed hinge
- ♦ For opening $\frac{5}{8}$ " larger than door size
- ♦ White powder coat finish or stainless steel #304

JL INDUSTRIES

Access Doors

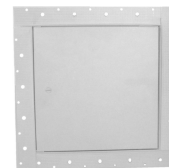
Available Accessories

LOCKJL Cylinder Lock

KEY Spare Key for Lock

Concealed Drywall for Walls and Ceilings - Model TMW

MODEL SIZE				
10 x 10	14 x 14	18 x 18	22 x 22	24 x 24



- ◆ For concealed appearance with wallboard
- ◆ Frame is 16 gauge steel with 1" drywall bead
- ◆ Flush door is 16 gauge steel with continuous, concealed hinge
- ◆ Flush screwdriver-operated steel cam
- ◆ For opening $\frac{5}{8}$ " larger than door size
- ◆ White powder coat finish

Concealed Plaster for Walls and Ceilings - Model TMP

DOOR SIZE
24 X 24



- ◆ For concealed appearance with plaster
- ◆ Frame is 16 gauge steel with 1 $\frac{5}{8}$ " plaster guard
- ◆ Flush door is 16 gauge steel with a continuous, concealed hinge
- ◆ Flush screwdriver-operated steel cam
- ◆ For opening $\frac{5}{8}$ " larger than door size
- ◆ White powder coat finish

DACE MANUFACTURING

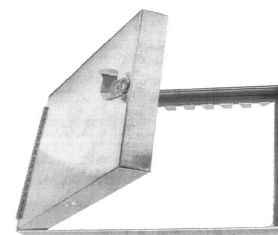
Duct Access Doors for Sheet Metal

These insulated duct access doors are used to provide economical access to the areas required. They can be installed quickly and easily

Model ADC and ADH

DOOR SIZE									
ADC (CAM LOCKS)	06 x 06	08 x 08	10 x 10	12 x 12	14 x 14	16 x 16	18 x 18	20 x 20	24 x 24
ADH (HINGED)	06 x 06	08 x 08	10 x 10	12 x 12	14 x 14	16 x 16	18 x 18	20 x 20	24 x 24

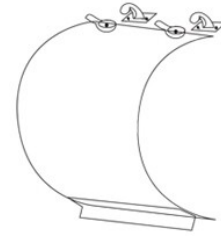
- ◆ 28/26 Gauge Galvanized Steel Door
- ◆ 24 Gauge Die-Formed Galvanized Steel Frame
- ◆ Polyethylene Gaskets
- ◆ $\frac{5}{8}$ " Machine Notched Tabs
- ◆ Plated Steel Cam Locks
- ◆ R-6 Insulation
- ◆ $\frac{1}{4}$ " Hemmed Edge



POTTORFF INDUSTRIES

Round Duct Access Door

- ◆ 20 Gauge Galvanized Steel Door Panel with Continuous Zinc Plated Steel Hinge
- ◆ Plated Steel Latches and Neoprene Gasket
- ◆ Door Panel: 12 x 10
- ◆ Duct Opening: 10 x 08



Model RAD duct access doors employ a roll formed door panel to provide access to ductwork utilized in low to medium pressure and velocity applications.

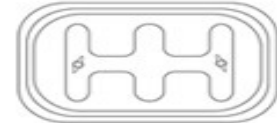
Model RAD

DUCT SIZE				
06	08	10	12	14

POTTORFF INDUSTRIES

Grease or High Temperature Duct Access Door

- ◆ 20 Gauge Galvanized Steel Door Panel with 16 Gauge Stamped Black Iron Backing Plate
- ◆ Ceramic Fiber Gasket, Duct to Duct
- ◆ 2300°F Max Temperature
- ◆ Zinc Coated Wing Nuts



Model DMHT access doors employ a full removable dual-panel door to provide access to ductwork utilized in low, medium, and high pressure and velocity applications exposed to high temperatures.

Model DMHT

WIDTH x HEIGHT	
10 x 06	12 x 06

DURO DYNE

Round Insulated Access Door

- ◆ 20 Gauge Galvanized Steel
- ◆ Up to 20 W.G. Positive Pressure
- ◆ High Impact Plastic Knobs
- ◆ Closed Cell Neoprene Gasket



MODEL NUMBER	DURO DYNE PART #	DOOR SIZE	MIN. DUCT SIZE	MAX. DUCT SIZE
MRADI4811	21137	04 x 08	08	11
MRADI81214	21144	08 x 12	12	14
MRADI121618	21151	12 x 16	16	18

POTTORFF INDUSTRIES

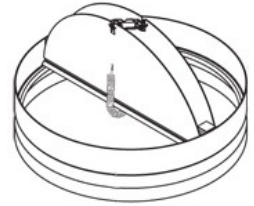
Ceiling Radiation Dampers

- ◆ 165°F Fusible Link
- ◆ Radiation Dampers: UL-555C Listed
- ◆ Fire Dampers: UL-555 Listed

Round Radiation Damper - Model CFDR

DIAMETER				
06	08	10	12	14

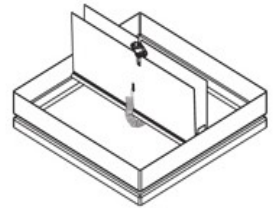
- ◆ 22 gauge galvanized butterfly blade
- ◆ For horizontal installation behind ceiling GRDs in 3 hour rated assemblies
- ◆ Sheetrock on blades for sizes 12" and larger



Square Radiation Damper - Model CFD

WIDTH x HEIGHT								
06 x 06	08 x 08	09 x 09	10 x 10	12 x 12	15 x 15	18 x 18	22 x 22	24 x 24

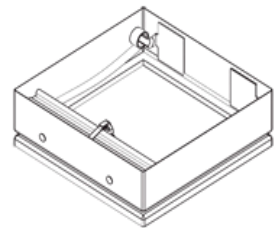
- ◆ 22 gauge galvanized butterfly blade
- ◆ For horizontal installation behind ceiling GRDs in 3 hour rated assemblies
- ◆ Sheetrock on blades for sizes 12" and larger



Square Radiation Damper - Model CFD410A

WIDTH x HEIGHT			
18 x 18	20 x 20	22 x 22	24 x 24

- ◆ Folded ceramic curtain style blade
- ◆ For horizontal installation behind ceiling GRDs in 3 hour rated assemblies

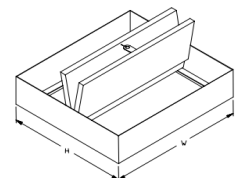


SAFE AIR

Radiation Damper

Model CFD420

- ◆ 22 gauge galvanized steel construction
- ◆ Ceramic blanket on blades
- ◆ 165°F fusible link
- ◆ Fits in 24x24 grille necks
- ◆ UL-555C Listed for 3 hour rated GRD assemblies



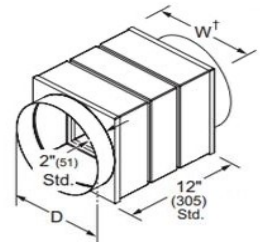
POTTORFF INDUSTRIES

Fire Dampers

Round Connection Static Fire Damper, Type A - Model VFDS

DIAMETER				
06	08	10	12	14

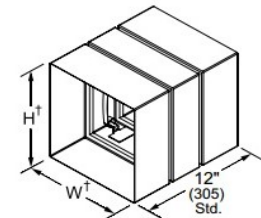
- ◆ 24 gauge curtain style blade and a 20 gauge 12" sleeve
- ◆ For 2 hour rated vertical installation in walls and horizontal installation in floors/ceilings
- ◆ Includes (2) 1 1/2" x 1 1/2" picture frame angles



Square Connection Static Fire Damper, Type A - Model VFDS

WIDTH x HEIGHT									
06 x 06	08 x 08	10 x 10	12 x 12	14 x 12	14 x 14	16 x 12	18 x 12	24 x 12	24 x 24

- ◆ 24 gauge curtain style blade and a 20 gauge 12" sleeve
- ◆ For 2 hour rated vertical installation in walls and horizontal installation in floors/ceilings
- ◆ Includes (2) 1 1/2" x 1 1/2" picture frame angles



ELSIE MANUFACTURING

UL Listed 165°F Fusible Links

Models **FLS39** and **FLS2165**

MODEL	LENGTH
FLS39	1.5"
FLS2165	2.625"



Access Door Inspection Label

Models **LABEL** and **LABELFD**

FIRE DAMPER

- ◆ Model LABEL: Red Letters on White Background, 5" x 5"
- ◆ Model LABELFD: White Letters on Red Background, 4" x 1 1/4"

- ◆ 100 per Roll
- ◆ Also Sold individually

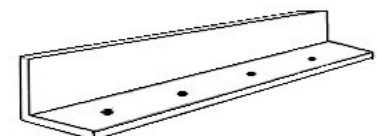


POTTORFF INDUSTRIES

Angle Iron

Model **AI**

- ◆ 16 Gauge Steel
- ◆ Pre-punched Holes
- ◆ 10' Length
- ◆ 1 1/2" x 1 1/2"



METALAIRE

Dampers

Motorized Round Damper - Model QORD

DIAMETER	08	10	12	14
LENGTH	09	11	14	14

- ♦ Durable galvanized steel construction
- ♦ Power open/power close, 24V
- ♦ Single blade design allows for maximum air control



24V Spring Return Damper - Model RZRD

DIAMETER				
06	08	10	12	14

- ♦ Durable galvanized steel construction
- ♦ Shipped spring open
- ♦ Motor can be removed and reinstalled for spring closed operation
- ♦ Mid-torque spring return motor
- ♦ Gasketing included



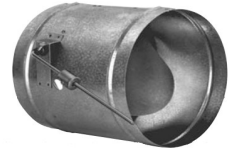
DURO DYNE

Dampers

Round Pressure Relief Damper - Model DDRD

DIAMETER	10
BYPASS @ 1200FPM	650 CFM
LENGTH	11

- ♦ Durable galvanized steel construction
- ♦ Plated steel counterbalance rod and weight, with sintered bronze oil impregnated bushings
- ♦ Counterbalance rod mountable on either side



Pressure Relief Damper - Model DD

NET OD	20 x 10	20 x 12
BYPASS @ 1200FPM	1600 CFM	1900 CFM

- ♦ Aluminum frame and blade construction
- ♦ Plated steel counterbalance rod and weight, with sintered bronze oil impregnated bushings
- ♦ Includes hardware for both flush and in-line mounting



POTTORFF INDUSTRIES

Extruded Aluminum Louver

- ◆ Aluminum Construction
- ◆ 4" Deep Frame, J-style Blades at 45°, with Bird screen
- ◆ 1 ½" Flange Frame
- ◆ Approximately ½" Undersized
- ◆ Mill Finish
- ◆ AMCA Certified for Air Performance and Water Penetration Ratings



Model EFJ445

SIZE			
12 x 12	18 x 18	24 x 12	24 x 24

POTTORFF INDUSTRIES

Backdraft Dampers

- ◆ Gravity Operated Formed Style Blades
- ◆ Vertical or Horizontal Mount
- ◆ Extruded Aluminum Channel Frame
- ◆ Mill Finish
- ◆ Approximately ¼" Undersized
- ◆ Exhaust or Intake Applications
- ◆ Rated up to 1250 FPM



Model BD50

SIZE	
12 x 12	24 x 24

LAMBRO INDUSTRIES

Round Midget Louver

- ◆ Galvanized Steel



Model RLS

DIAMETER	
03	04

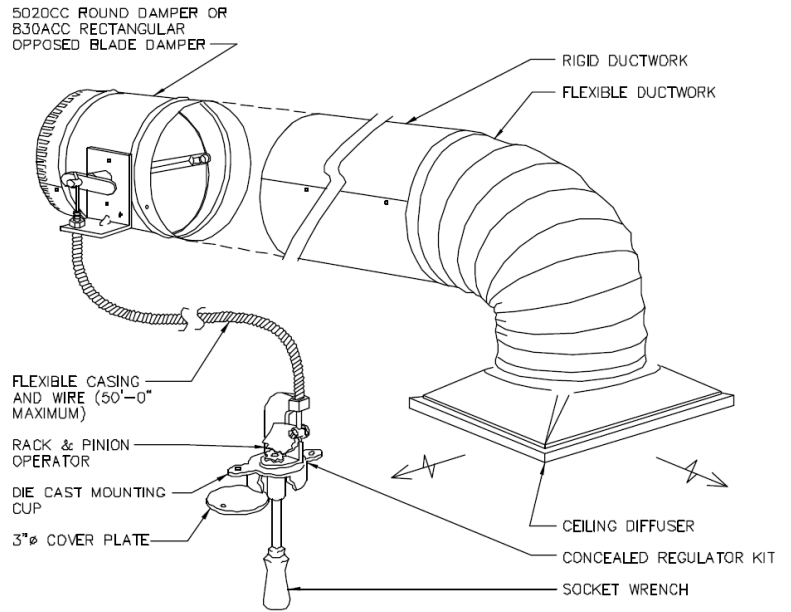
YOUNG REGULATOR

Bowden Cable Control System

MODEL	DESCRIPTION
BCW	50' Bowden Cable Wire
BC03012	Bowden Control Wrench

Balancing dampers located in inaccessible spaces are easily controlled with the Young Regulator Bowden Remote Cable Assemblies. Access is concealed in the ceiling, inside plenums, or moved to a convenient area such as a nearby mechanical room or above a lay in ceiling.

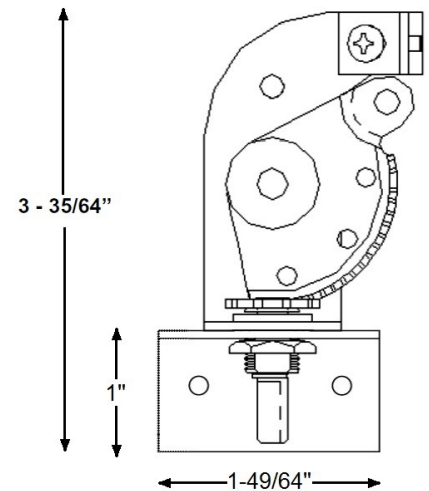
The BCW cable runs from a steel rack and pinion locking controller to a damper where the rotary motion of the rack and pinion controller is converted to a push-pull motion with a lever arm.



Model BC27027538

- ♦ Used to control dampers from a variety of places, such as the diffuser frame, inside a plenum, and through the face of a floor grille
- ♦ Control kit can be used with internally or externally controlled round or rectangular dampers

Construction	
Bowden Cable	.054" stainless steel control wire encapsulated in 1/16" flexible galvanized spiral wire sheath
Control Kit	14 gauge galvanized steel rack and pinion gear drive
Gear Drive Torque	Capable of delivering 35 in. lbs of push/pull torque
Control Shaft	D-style flatted 1/4" diameter with 265° rotation provided 1 1/2" linear travel capability
Control Kit Mounting Bracket	18 gauge galvanized steel
Dampers by others	For dampers with 1/2" round or 3/8" square damper shaft



Couplings



MODEL	DESCRIPTION
607LASH	For 1/2" Round Rod
617LASH	For 3/8" Square Rod

301 Concealed Ceiling Regulators



For 3/8" rods

MODEL	DESCRIPTION
301CH	Chrome Cover
301PL	Primer Cover

315 Regulators for Thick Ceilings to 1 1/8"



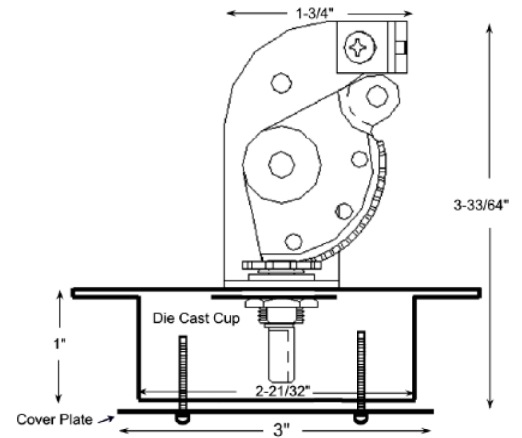
For 3/8" rods

MODEL	DESCRIPTION
315CH	Chrome Cover
315PL	Primer Cover

Model BC27030138 - Concealed Ceiling Regulator with Cup and 3" Cover Plate

- Control kit is designed to be imbedded in a sheetrock or gypsum board ceiling so that the unit is flush with the finish surface
- Removable cover plate allows access to the controller

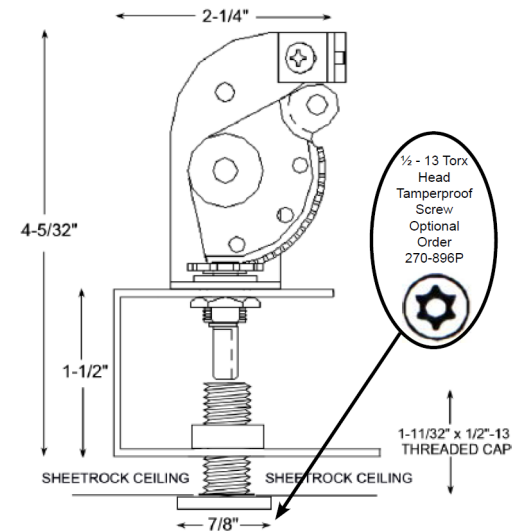
Construction	
Bowden Cable	.054" stainless steel control wire encapsulated in $\frac{1}{16}$ " flexible galvanized spiral wire sheath
Control Kit Housing and Cover Plate	2 $\frac{5}{8}$ " diameter die cast aluminum cup with 3" diameter zinc plated cover
Control Kit	14 gauge steel rack and pinion gear drive
Gear Drive Torque	Capable of delivering 35 in. lbs of push/pull torque
Control Shaft	D-style flatted $\frac{1}{4}$ " diameter with 265° rotation providing 1 $\frac{1}{2}$ " linear travel capability
Cover Plate Screws	Quantity (2) of 6-32 x $\frac{5}{8}$ "
Dampers by others	For dampers with $\frac{1}{2}$ " round or $\frac{3}{8}$ " square damper shaft



Model BC27089638 - Concealed Ceiling Regulator with $\frac{7}{8}$ " Threaded Cap

- Control kit is designed to mount atop a "C" bracket that fastens to a ceiling support stud above the ceiling, with the threaded cap flush with the finished surface
- Threaded screw cap allows access to the controller

Construction	
Bowden Cable	.054" stainless steel control wire encapsulated in $\frac{1}{16}$ " flexible galvanized spiral wire sheath
Control Kit Bracket and Threaded Cap	18 gauge steel "C" bracket to be fastened above the ceiling, and $\frac{7}{8}$ " diameter cold rolled steel zinc plated threaded cap
Control Kit	14 gauge steel rack and pinion gear drive
Gear Drive Torque	Capable of delivering 35 in. lbs of push/pull torque
Control Shaft	D-style flatted $\frac{1}{4}$ " diameter with 265° rotation providing 1 $\frac{1}{2}$ " linear travel capability
Dampers by others	For dampers with $\frac{1}{2}$ " round or $\frac{3}{8}$ " square damper shaft



Cover Plates

MODEL	DESCRIPTION
CH	301 Chrome Plate
PL	301 Primer Plate
31511C*	315 Chrome Plate

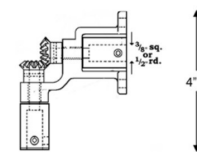
Damper Rods



For $\frac{3}{8}$ " sq. rods
661B sold in pairs

MODEL	DESCRIPTION
660	Steel rod, 24"L
661B	Universal joint

927 Miter Gears Model 927C



Die Cast Gears
 $\frac{3}{8}$ " square shaft



DURO DYNE

Hardware/Parts

Damper Blade Slide Pin
Model DBP1 #2094



$\frac{7}{16}$ " diameter and $\frac{1}{2}$ " diameter
slide pin, $\frac{5}{8}$ " length
Sold per box of 100

Damper Rod
Model BKP6 #2020



$\frac{1}{2}$ " diameter pin and 6"
long

Bronze Bushing
Model BKP10 #2013



$\frac{1}{2}$ " diameter I.D.
Sold per box of 100

Ball Joint Damper Casting
Model SRP14 #8032



$\frac{1}{4}$ " shaft size

Round to Square Pins
Model BKP8 #2063



$\frac{1}{2}$ " diameter to $\frac{3}{8}$ "
square, 4" long

Rod Clips
Model KP25 #8053



$\frac{3}{8}$ " damper rod clips
Sold per box of 100

Open End Bearing Cast Alloy
Model SB138 #8027



$\frac{3}{8}$ " square shaft size
Sold per box of 25

Closed End Bearing Cast Alloy
Model SB338 #8028



$\frac{3}{8}$ " square shaft size
Sold per box of 25

Plastic Bushing
Model BKP83 #2243



$\frac{3}{8}$ " square I.D.
Sold per box of 100

Don't see what you're looking for?
Ask us about our special order
options!

DURO DYNE

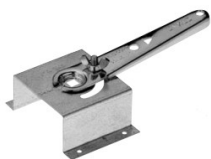
Hardware/Parts

High Bracket
Model BKP22 #2008



High bracket as supplied
in Opax Blade Kits

Standoff with Economy Handle
Model ESO200 #7211



$\frac{3}{8}$ " square shaft, 2" stand
height

Quadline Damper Quadrant
Model KL7R #8064



$\frac{1}{2}$ " round Shaft Loc
quadrant

Splitter Damper Bracket
Model SRP40 #8034



$\frac{1}{4}$ " shaft size

Quadline Damper Quadrant
Model K4 #8059



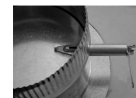
$\frac{3}{8}$ " quadrant

Stampline Regulator
Model KR3 #8058



$\frac{3}{8}$ " dial regulator

Slide Rapid Extension
Model RS356 #8233



Set includes: 1 RB-50 spring bearing, 1
RB-25T solid bearing, 1 RP-3 washer, 1
RP-1 handle, and 1 RP-2 wing nut

Sold per pack of 10

Quadline Damper Quadrant
Model K5 #8060



$\frac{1}{2}$ " quadrant

Stampline Regulator
Model KS7L #8046

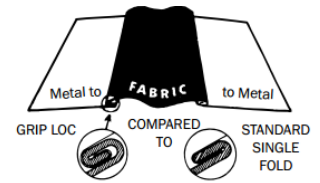


$\frac{1}{4}$ " jiffy regulator set

Don't see what you're looking for?
Ask us about our special order
options!

DURO DYNE

Flexible Duct Connector



- ◆ Features Grip Loc

MODEL	DURO DYNE NUMBER	FABRIC MODEL	BASE FABRIC	COATING	LENGTH
MFN	#10003	Neoprene Metal-Fab	Woven Fiberglass	Neoprene	100'

DURO DYNE

Vane Rail

- ◆ 24 Gauge Galvanized Steel Construction
- ◆ Precision Stamped and Slotted for Uniform Spacing of Vanes

MODEL	DURO DYNE NUMBER	LENGTH
VR2*	#4002	100' Continuous Coils

M & M MANUFACTURING

Hollow Turning Vane and Vane Rail

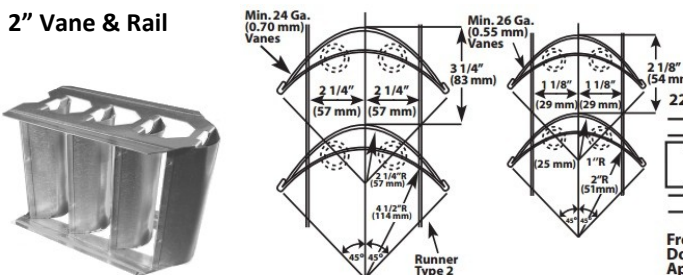
- ◆ 16 Gauge Steel
- ◆ Pre-punched Holes
- ◆ 10' Length
- ◆ 1 1/2" x 1 1/2"
- ◆ Self Aligning Tabs for Easy Vane

Hollow Turning Vane and Vane Rail are designed to redirect the air through elbows and tees in the ductwork without significant loss of air pressure. Assembled Vane & Rail minimizes turbulence in the ductwork.

MODEL	DURO DYNE NUMBER	GAUGE	SIZE
VANE2	#13203	26	2
VANE4	#13207	24	4

MODEL	DURO DYNE NUMBER	GAUGE	SIZE
RAIL2	#13300	24	2
RAIL4	#13302	22	4

2" Vane & Rail



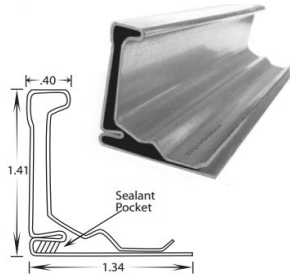
4" Vane & Rail



DURO DYNE

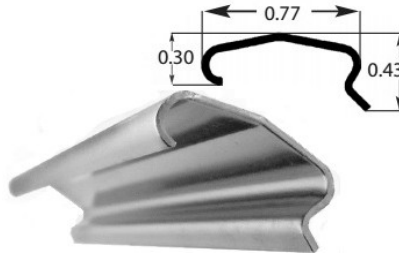
Flange, Cleats, and Corners

J Flange* Model DOMJ #21234



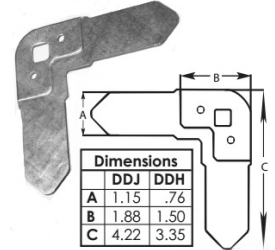
- ♦ 20 gauge steel
- ♦ For large commercial and high pressure applications
- ♦ 12' length per piece
- ♦ Sold in 100 piece bundles

Cleat for DOMJ Flange



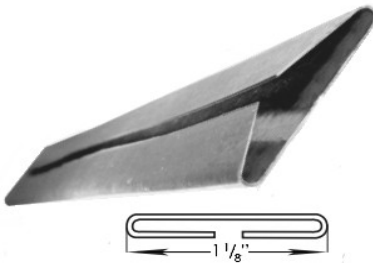
- ♦ 500 6" pieces (total 250') per box
- ♦ Sold per box
- ♦ **Model DOMCLT, #21250**
20 gauge galvanized steel

Corner for DOMJ Flange



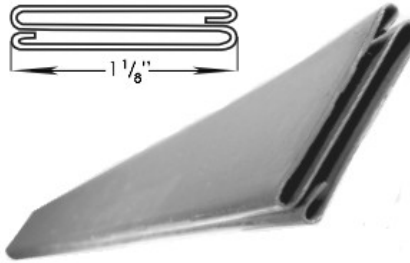
- ♦ 250 pieces per box, sold per box
- ♦ Galvanized steel
- ♦ **Model DDJ, #24242**
J Corner, with 3/8" nut and bolt
- ♦ **Model DDC, #21243***

Flat Drive Cleat Model FDSL #13255



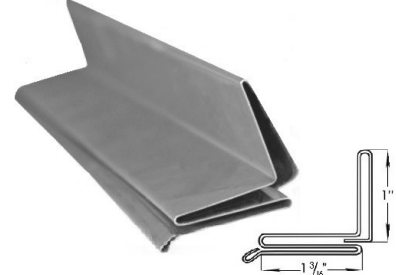
- ♦ 24 gauge steel
- ♦ For lighter and residential ductwork applications
- ♦ 10' length per piece

Flat S Lock Model HS #13256



- ♦ 24 gauge steel
- ♦ For the connection of lighter ductwork applications
- ♦ 10' length per piece

Standing S Lock



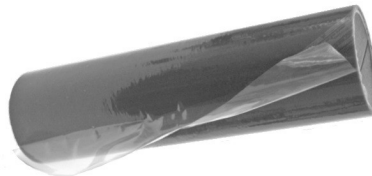
- ♦ 10' length per piece
- ♦ **Model SS, #13214**
1"
- ♦ **Model SS158, #13236**

Butyl Gasket Tape Model TAPE #21042



- ♦ Provides a moisture and vapor-tight seal to prohibit water and dust
- ♦ Non-corrosive
- ♦ Temperature range: -40°F to 249°F
- ♦ 500' per box

Dyn-O-Wrap Model DW24200 #13380



- ♦ Excellent adhesion to ductwork, yet easily removable without leaving residue
- ♦ 24" x 200' roll

Weld Pins

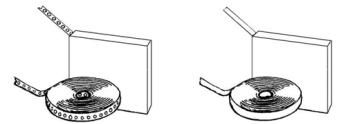


Model	Num.	Nominal Length After Setting	Use	Qty per Box
FTC200 #26227		1.781	2" ins	3M



M & M MANUFACTURING

Hanger Straps



MODEL	TYPE	WIDTH (IN.)	LENGTH OF ROLL (FT.)
STRAP	Perforated	$\frac{3}{4}$	100
STRAP150	Non-Perforated	$1\frac{1}{2}$	100

NPS INDUSTRIES, INC

Flexible Duct Hanger

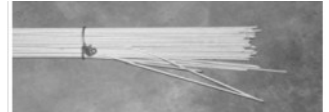
Model **BLACKSTRAP**



TYPE	WIDTH (IN.)	LENGTH OF ROLL (FT.)
Nylon	$1\frac{3}{4}$	300

T-Bar Hanging Wire

Model **WIRE12**



- ◆ Approximately 130 Pieces per 50lb Bundle
- ◆ 12' Length

Nylon Ties

Model **L36175**



- ◆ 50 Pieces per Bag, Sold per Bag
- ◆ 36" Length

DURO DYNE

Dyna-Tite Cable Locks

Model **CL23**



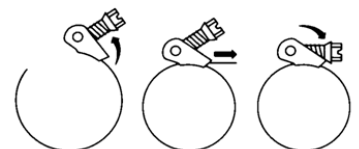
- ◆ Sold 10 per Pack

MODEL	DURO DYNE NUMBER	DIAMETER	LENGTH OF ROLL (FT.)	MAX LOAD (LB.)
WC4	30204	$\frac{1}{8}$	500	250
WC6	30206	$\frac{3}{16}$	250	640

DACE MANUFACTURING

Stainless Steel Clamps

Model **LS**



DIAMETER					
06	08	10	12	14	16

DESIGN POLYMERIC

Sealant

Available Accessories
BRUSH 2" Bristle Brush

Recommended for sealing joints, seams, duct wall penetrations, and connections on flexible duct

Model DP1010

- ♦ A smooth, water based, premium quality, UL-723 Listed, high pressure/high velocity duct sealant for commercial and residential supply and return air duct use

Model DP1020

- ♦ A fiber reinforced, water based, premium quality, UL-723 Listed, high pressure/high velocity duct sealant for commercial and residential supply and return air duct use



SHURTAPE

Duct Tape

- ♦ Models AF973, AF982, PC609, PC609B, PC857, PC857S, and SF686 Tested in Accordance with UL-723

Model AF100

- ♦ 2 mil aluminum UL-181 Listed foil tape has an acrylic adhesive used for joining and sealing fiberglass ductboard and Class 1 Flex Duct
- ♦ Provides an air-tight seal
- ♦ Silver with red letters



2 ½" x 60 yard roll

Model AF974

- ♦ 2 mil dead-soft aluminum foil tap used to seal and join aluminum backed duct wrap, to create water and vapor barriers, and as a metal repair tape for temporary metal repair
- ♦ Silver



2" x 50 yard roll

Model AF984

- ♦ FSK tape-UL 723 used to seal, seam, and join scrim reinforced pipe and duct insulation, and can be used in all weather conditions
- ♦ Silver



3" x 60 yard roll

Models PC609 and PC609B

- ♦ Contractor grade cloth duct tape used for sealing metal and flex duct work, and patching and mending thermal insulation
- ♦ Model PC609: Silver; Model PC609B: Black



2" x 60 yard roll

Models PC857 and PC857S

- ♦ UL-181B-FX Listed cloth duct tape used to seal, seam, and join Class 1 Flex Duct systems, HVAC applications, and installing air ducts and air connectors
- ♦ Model PC857: Gray; Model PC857S: Silver



2" x 60 yard roll

Model SF686

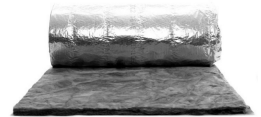
- ♦ UL-181B-FX Listed ShurMASTIC® indoor/outdoor roll mastic foil tape used for air-tight and moisture-free sealing of Class 1 Flex Duct, sheet metal, PVC coated duct and duct wrap vapor barriers
- ♦ Silver



2" x 60 yard roll

JOHNS MANVILLE

Duct Wrap



A brown, lightweight, highly resilient, blanket-type thermal insulation formaldehyde-free duct wrap. It is supplied with an FSK vapor barrier with a 2" stapling tab and is manufactured from rotary-process fiber glass.

MODEL	R-VALUE	SIZE (THICKNESS X WIDTH X LENGTH)
MVLDW25	R-6.5	2 1/2" x 48" x 75'

JOHNS MANVILLE

Duct Liner

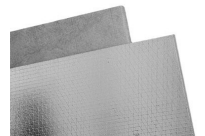


A flexible duct liner made from strong, glass fibers bonded with a thermosetting resin. An acrylic coating with a flexible glass mat reinforcement provides a smooth airstream surface.

MODEL	R-VALUE	SIZE (THICKNESS X WIDTH X LENGTH)
MVLDL15	R-6	1 1/2" x 47 1/2" x 50'

JOHNS MANVILLE

Duct Board



A duct board that is produced from durable glass fibers, bonded with a thermosetting resin. The exterior surface features a fire-resistant FSK facing extending the full width of the male edge. It is molded with double-density, male/female edges for secure connections.

MODEL	R-VALUE	SIZE (THICKNESS X WIDTH X LENGTH)
MVLDB150	R-6.5	1 1/2" x 48" x 10'

Fire Blanket

Model BLANKET



◆ Thermal Ceramic

◆ 30" x 30"

For supply or return air grilles or diffusers when located in fire-rated lay-in ceilings.

DURO DYNE

Glasline Grille Clips

Model GC1



Duro Dyne number #36060

For attaching grilles and diffusers to the ends of fiberglass ducts.

DURO DYNE

Tools and Accessories

ProPoint Self Drilling Screws



Model PPT1034 #14190 10 x $\frac{3}{4}$
Sold per bucket of 1000

Model PPT812 #14185 8 x $\frac{1}{2}$
Sold per bucket of 1000

Drill Screw Chucks



DCL14 #16008 $\frac{1}{4}$ " head
2 $\frac{5}{8}$ " overall length

DCL516 #16009 $\frac{5}{16}$ " head
2 $\frac{5}{8}$ " overall length

Aerosol Adhesive Model ASAW #5015



Steel Tinner's Hammer Model HAMMER18 #838396



18 oz
11 $\frac{3}{4}$ " length

Compound Action Snips



Model M6R #820010 Circle left
Red grips

Model M7R #820011 Circle right

Super Saber Self Piercing Screws Model SAT812 #14160



8 x $\frac{1}{2}$
Sold per bucket of 1000

Compound Action Snips



M1R #820001 Cuts left from tight
curves to straight - red grips

Self Adhesive Hangers

Sold per pack of 100



Model	Num.	Length	Use
SAH134 #26069		1.75	1 $\frac{1}{2}$ "- 1 $\frac{1}{2}$ "# dens.
SAH250 #26071		2.5	2" ins

Staplers

Tools

Outward Clinch Tacker Model L4CS



Model L4D $\frac{1}{2}$ " staples, sold per box

Blunt Nose Stapling Plier Model MP3



Opens for tacking
Model P3C $\frac{3}{8}$ " staples, sold per box



MALCO PRODUCTS

Tools

Cushioned-Gripped Serrated Duct Knife Model DK6S

- ♦ Double edged, cutlery grade steel blades
- ♦ Resharpenable
- ♦ Cushion grip
- ♦ 6" length



Manual Cut-Off Tie Tool with Grip Model TY4G

- ♦ Manual cut off lever
- ♦ Vinyl cushion grips with hand stops
- ♦ 6" length



Duct Stretcher Model DS2

- ♦ Rugged anodized aluminum body
- ♦ Vinyl cushion grip with offset handle
- ♦ 16" length
- ♦ **Model DS1C**
Replacement wheels, nuts, and screws **(Sold with 2 each)**



Locking Duct Stretcher Model DS3

- ♦ Durable steel frame
- ♦ Offset handle
- ♦ 12" length



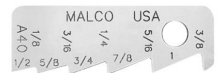
CONNEXT Magnetic Hex Hand Drivers

- ♦ 10 1/2" overall length
- ♦ **HHD1**
1/4" hex, red color code



Sheet Metal Scribe Model SCRIBE

- ♦ Five teeth produce ten pre-set scribing depths from 1/8" to 1"



Don't see what you're looking for?
Ask us about our special order options!

Lashley & Associates is proud to be a Manufacturer's Representative and Distibitor for the following compamies:

Acme Engineering

Gas Detection Monitors for CO, CO2, NO2, Ammonia, VOC

Air Concepts

Drum Louver, Punkah Louver, Air Nozzles, Factory Ventilation Outlets, Specialty Grilles

Air Mate

Residential Grilles, Registers and Diffusers

American Metal Products

Type B Gas Vent, Double Wall Construction, Chimney Connector System, Temperature Engineered System

American Air Filter (AAF)

Gas Phase Filtration Equipment and Media

Arrow United Industries

Architectural Louvers, Control Dampers, Industrial Dampers, Acoustical Louvers, Penthouses, Brick Vents

Atco Rubber Products, Inc.

UL Listed Flexible Duct, Insulated and Un-Insulated Aluminum Flexible Duct

AtmosAir

Bi-Polar Ionization Technology to Improve Indoor Air Quality by Inhibiting the Growth of Mold, Control the Spread of

Berner International

Air Doors / Curtains, Strip Doors, Air Entrance Systems

Broan Manufacturing Company

Exhaust Fans, Range Hoods, Heaters, Indoor Air, Attic Ventilators

Complete Curb Products

Roof Curbs, Curb Adapters, Package Adapters, Equipment Supports

Denlar Hoods

Commercial Style Fire Suppression for Residential Grade Appliances for Dorms, Multi-Family, Community Centers,

Design Polymeric

Sealants and Adhesives

Duraavent

"Fas-N-Seal" Stainless steel Double Wall Gas Vent

Duro Dyne

Weld Pins, Insulation Fastening Material, Air Regulation Control Equipment, Zone Control, Flex Duct Connector

Entrematic

Commercial & Industrial HVLS Fans (formally known as Kelly Fans)

Filtration Group

Filters and Filter Housings, Side Access types with Inner Seal, Carbon Sorb, HEPA Crank Seal, HEPA Bag-In Bag-Out, Seal V-Bank, Front Access type with Seal Track Lock, Seal Frame, HEPA Seal Frame, Custom Skid Mounted Isolation Room

J. L. Industries

Wall and Ceiling Access Doors, Fire Extinguishers and Cabinets, Security Access Doors

Johns Manville

Pipe and Equipment Insulation

Lewis & Lambert

Spiral and Double Wall Duct

Loren Cook Fans

AMCA Certified Fans – Industrial & Commercial Grade Centrifugals, Vane Axial, Vent Sets, High Temp, Gravity Ventilators, Energy Recovery Systems

M & M Manufacturing

Duct Pipe, Elbows, Register Boxes, Reducers, Collars, Drain Pans, Vane Rail, Vane Runner

Markel

Electric Unit Heaters, Cabinet Heaters, Ceiling Heaters Architectural Sill Line Convectors, Baseboard Heaters, Convention Heaters, Duct Heaters –Open Coil/Finned Tube Radiant & Infrared, Specialty-Wash Down Heaters, Wall Heaters, Air Curtains

Metalaire

Air Terminal Units, Grilles, Registers, and Diffusers

Milcor

Roof Hatches, Smoke Vents, Sidewalk Doors, Metal Access Panels

Nederman

Dust, Mist and Fume Extraction. Snorkels, Extraction Arms, Filter Systems, High Vacuum Units, Vacuum Blasters, Welding/Grinding Exhaust Systems, Vehicle Exhaust Systems, Hose reels

Nord-Fab

Quick-Fit Spiral Ductwork for Dust, Mist, Fume and Smoke Collection.

Pate Company

Roof Curbs, Pipe Curb Assembly, Equipment Supports, Combination Equipment Base, Pipe Roller Supports

Peppertree Air Solutions

The “Original Flexmaster”; UL-181 Listed and Union Made Air Duct, Specialty Duct / Hose for Material Handling, A/C Ventilation, Medium & High Temperatures, Chemical Fume, Exhaust Fume, Stainless Steel and Aluminum Triple-Locked Formed and Leak Proof Seams; Hospital Grade. Sheet Metal Fittings, Access Doors and Accessories.

Pottorff

Fire Dampers, Fire/Smoke Dampers, Radiation Dampers, Wood Truss Radiation Dampers, Louvers, Control Dampers, Access Doors, Sound Control Products, Attenuators, Sound Panels

Prihoda

Custom Fabric, Colors & Designs, UL Listed Duct & Diffuser Systems with Antimicrobial Effect and Antistatic Designed.

Protech Systems

Stainless Steel Double Wall Type “B” Vent Pipe

Reliable, Inc.

Architectural Louvers & Grilles

Selkirk

Chimney, Venting & Fireplace Products; also Grilles, Registers & Diffusers

Reznor

Gas Unit Heaters & Duct Furnaces, Hydronic Unit Heaters, Oil Fired Unit Heaters, Infrared Radiant Heaters, Direct Fired Make-Up Air Heaters

ThermaDuct

Pre-engineered Outdoor Duct Systems, R-8 thru R-24 Insulation Value

US Aire

Residential and Commercial Grilles, Registers and Diffusers

Van Packer

Chimney and Exhausting Products, Positive Pressure Stack, Air or Material Insulated Pipe, Grease Duct, Engine Turbine Exhaust, Single Wall Exhaust

Young Regulator

Regulators, Remote Control Systems, Motorized Damper Systems

PRODUCT BY VENDOR

AMERICAN METAL PRODUCTS	Double Wall Gas Vent - Type B	25-26
	Perforated Ductboard Back Diffusers	3
ATCO	Flexible Duct	33
BROAN	Ceiling Fans • Accessories	20-22
	Roof Caps • Wall Vent	23
COMPLETE CURB PRODUCTS	Roof Curbs	34
DACE MANUFACTURING	Adapters • Extension Collars • Ductboard Starting Collars	29
	Stick-on Collars	30
	Duct Access Doors	36
	Stainless Steel Clamps	48
DESIGN POLYMERICS	Sealant	49
DURO DYNE	Round Insulated Access Doors	37
	Pressure Relief Dampers	40
	Hardware / Parts • Flexible Duct Connector • Vane Rail • Flange, Cleats, and Corners	45-47
	Cable Locks	48
	Tools	51
ELSIE MANUFACTURING	Fusible Links	39
JL INDUSTRIES	Access Doors • Cylinder Key Lock	35-36
JOHNS MANVILLE	Duct Wrap • Duct Liner • Duct Board	50
LAMBRO, INC	Round Midget Louver	41
LEWIS & LAMBERT	Spiral Pipe and Accessories	24
LIGHTNING, INC	Plastic Egg Crate Grilles	11
LOREN COOK COMPANY	Roof Mounted Exhaust Fans	16-17
	Square Inline Centrifugal Fans	18
	Gravity Ventilators	19
	Ceiling-Wall Cabinet Fans	20
	Single Wall Snap-Lock Pipe • Sheet Metal Fittings	27-28
M & M MANUFACTURING	Tools	52
MALCO PRODUCTS METALAIRE	Square Cone Diffusers • Plaque Diffusers	1
	Pattern Diffusers	2
	Perforated Diffusers • Perforated Face Panel	3-4
	Round Ceiling Diffusers • Surface Mount Frame	5
	Plenum Slot Diffusers	6
	Sidewall Supply Registers	7
	Curved Blade Ceiling Registers • Spiral Duct Grilles	8-9
	Return Air Grilles	10
	Egg Crate Returns • Return Air Filter Grilles • Door Grilles	11-12
	Volume Dampers • Opposed Blade Dampers	13-14
	Air Terminal Units	15
	Motorized Dampers	40
	Flexible Duct Hanger	48
NPS INDUSTRIES		

PRODUCT BY VENDOR, CONT.

PEPPERTREE AIR SOLUTIONS	Sheet Metal Fittings	31
	Flexible Duct	33
POTTORFF INDUSTRIES	Round Duct Access Doors • High Temperature Duct Access Doors	37
	Wall Louvers • Backdraft Dampers	41
	Fire Dampers • Radiation Dampers	38-39
SHURTAPE	Duct Tape	49
USAIRE	Stamped Steel Sidewall Supply Registers	7
	Stamped Steel Curved Blade Ceiling Supply Registers	8
	Stamped Steel Return Air Grille	10
	Stamped Steel Filter Grilles • Stamped Steel Plenum Back Filter Grilles	12-13
	Radial Shutter Dampers	14
YOUNG REGULATOR	Regulators and Bowden Cable Control System	42-43

ALPHA BY PRODUCT

A	Access Doors	35-37
	Access Door Inspection Labels	39
	Adapters	29
	Air Terminal Units	15
	Angle Iron	39
B	Backdraft Damper	41
	Bearings • Brackets • Bushings • Blade Kits	44-45
	Bowden Cable Control System	42-43
	Brush	49
C	Cable Locks	48
	Ceiling Cabinet Fans	20-22
	Ceiling Radiation Dampers	38
	Cleats	47
	Cone (Step-down) Diffusers	1,4
	Corners	47
	Curved Blade Ceiling Supply Registers	8
	Damper Hardware	44-45
D	Door Grilles	11
	Double Wall Gas Vent - Type B	25-26
	Duct Board	50
	Ductboard Starting Collars	29
	Duct Connectors	46
	Duct Liner	50
	Duct Wrap	50
	Egg Crate Returns	11
E	Extension Collars	29
F	Fire Blanket	50
	Fire Dampers	39
	Flexible Duct	33
	Flexible Duct Connectors	46
	Flexible Duct Hanger	48
	Fusible Links	39
	Gravity Ventilator	19
G	Grille Clips	50
H	Hanger Straps	48
	Hollow Turning Vane	46
I	Inline Adapters for Cabinet Fans	22
	Insulated Back Pan	1
	Insulated Grille Box	28
J	J Flange	47

ALPHA BY PRODUCT, CONT.

M	Manual Balancing Damper with Cable	32
	Motorized Round Damper	40
N-O	Nylon Ties	48
P	Pattern Diffusers	2
	Perforated Diffusers	3-4
	Perforated Face Panel	4
	Plaque Diffusers	1
	Plenum Slot Diffusers	6
	Pressure Relief Dampers	40
	Quadrants	45
Q	Regulators	42
R	Return Air Grilles	10
	Return Air Filter Grilles	12
S	Roof Caps	23
	Roof Curbs	32
	Roof Mounted Exhaust Fans	16-17
	Round Diffusers	5
	Round Midget Louvers	36
	Sealant	49
	Screws	51
	Sheet Metal Fittings	31
	Sidewall Supply Registers	7
	Single Wall Flashing	27
	Snap-Lock Pipe	27-28
	Speed Controls	22
	Spiral Pipe and Fittings	24
	Stainless Steel Clamps	48
	Stamped Steel Curved Blade Ceiling Supply Registers	8
	Stamped Steel Sidewall Supply Registers	7
	Stamped Steel Plenum Back Filter Grilles	13
	Stamped Steel Return Air Filter Grilles	12
	Stamped Steel Return Air Grilles	10
	Staplers and Staples	51
	Stick-on Collars	30
	Surface Mount Frame	5
T-U	T-Bar Hanging Wire	50
	Tape	49
V	Tools	51-52
	Vane Rail	46
	Vent Caps	27
	Volume Dampers	14
W-X-Y-Z	Wall Louvers	41





OUR MISSION:

To provide products to the HVAC industry at a fair price that reflects both quality and the value added service we provide, while maintaining profitability to fund continued growth.

OUR VISION:

To be the best at what we do and to be the preferred supplier to our existing and new customers.

To achieve this vision, we believe we must:

- **Be fair, ethical, and honest with our customers and suppliers**
- **Show respect for our employees, recognizing that they are the key to our continued success**
- **Enhance our employees' skills through continual training**
- **Be curious, imaginative, and courageous in challenging our current thinking**
- **Make continuous improvement a way of life**





Lashley
& Associates, Inc.

**3215 Claymoore Park Drive
Houston, TX 77043**

Phone: (713) 462-8888

Fax: (713) 462-8881

Toll Free: (888) 527-4539

www.lashleyinc.com

sales@lashleyinc.com



Office Open Monday - Friday 8:00 AM to 5:00 PM

Warehouse Open Monday - Friday 7:00 AM to 5:00 PM

Closed Saturday, Sunday & Holidays